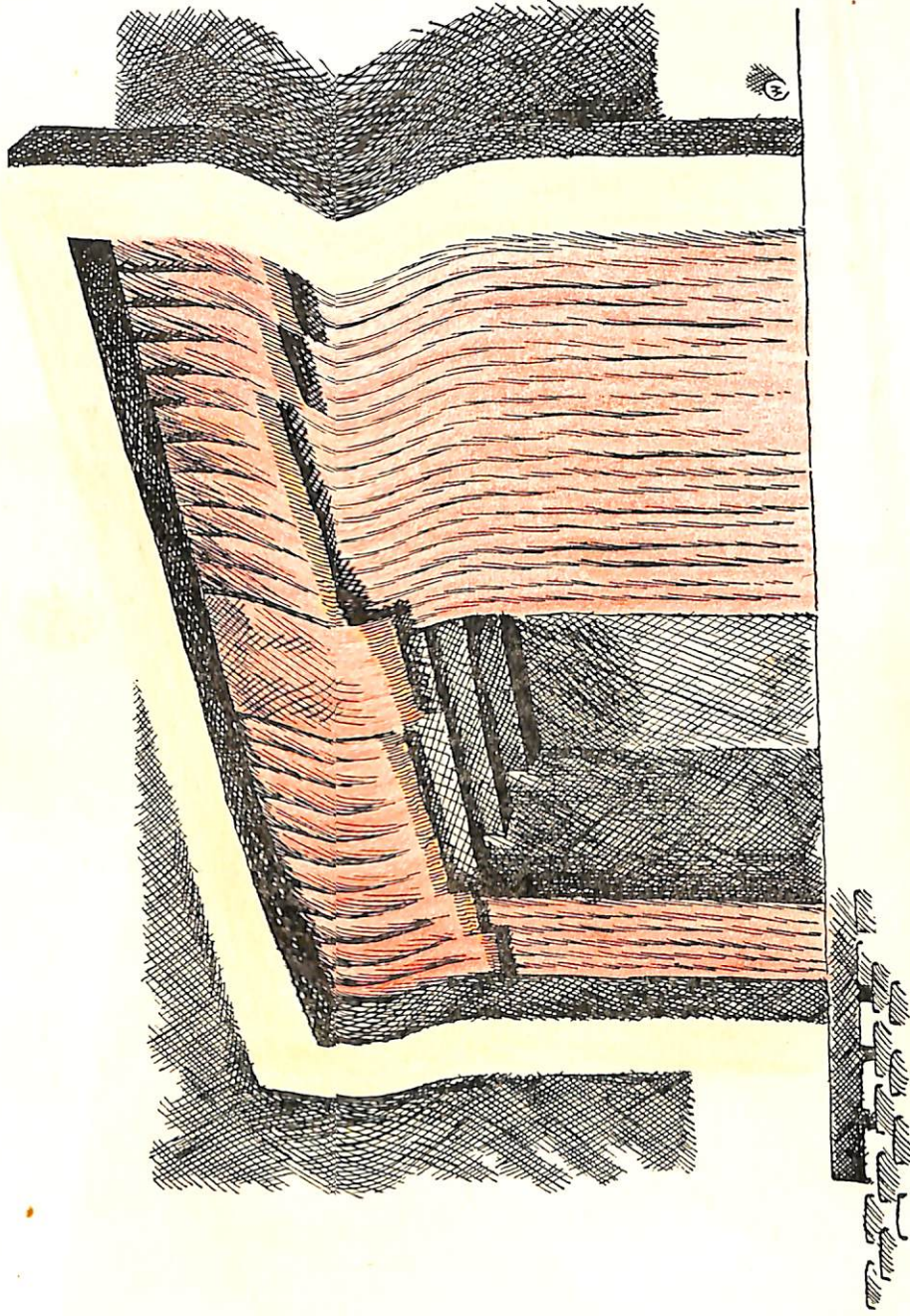


DESIGNED BY

**Hubert Mitchell**  
\*\*\* Industries \*\*\*

HARTSELLE, ALABAMA

STAGE EQUIPMENT  
DESIGNED FOR  
**APR. COLA SCHOOL**




FRONT ELEVATION



#1143 Hum t e r e n v e l o u r







#1143 Hunter Green velour

CLASS OF SERVICE

This is a full-rate Telegram or Cablegram unless its deferred character is indicated by a suitable symbol above or preceding the address.

# WESTERN UNION

1201

SYMBOLS

DL=Day Letter  
 NL=Night Letter  
 LT=Int'l Letter Telegram  
 VLT=Int'l Victory Ltr.

W. P. MARSHALL, PRESIDENT

= 7106A =

The filing time shown in the date line on telegrams and day letters is STANDARD TIME at point of origin. Time of receipt is STANDARD TIME at point of destination

JWU J062 DL PD=GREENSBORO NCAR JUN 5 1951 1002A=

:DL EMERICK=

:SUPT OF SCHOOLS LEESBURG VIR=

WE QUOTE LUMP SUM PRICE 300. TO FURNISH AND INSTALL VELOUR STAGE CURTAIN INCLUDING VALANCE AND STEEL TRACK IF CYCLODRAMA CURTAINS BORDERS AND RIGGING ARE REQUIRED AD 205. LETTER OF CONFIRMATION FOLLOWS=

STAGE DECORATION AND SUPPLIES:

300 205=

*Key*  
 [Stamp: JUN 5 1951] *ME*

THE COMPANY WILL APPRECIATE SUGGESTIONS FROM ITS PATRONS CONCERNING ITS SERVICE

# SOUTHERN DESK COMPANY

INCORPORATED

PHONE 2328

MANUFACTURERS OF

*Public Seating & Institutional Furniture*

HICKORY, NORTH CAROLINA

May 30, 1951

Mr. O. L. Emerick  
Division Superintendent  
Loudoun County School Board  
Leesburg, Virginia

Dear Mr. Emerick:

We have your letter of May 17, requesting quotations on a stage curtain for the Arcola School.

For this stage, our supplier the Pittsburgh Stage & Equipment Studios, have recommended the following equipment:

- One Valance 3'-0" wide by 23'-0", 8 widths of material.
- One Curtain made in two sections, each 11'-6" high by 13'-0" wide, 9 widths of material.

The above equipment to be installed on #722 heavy duty silent steel track. The cyclorama to consist of:


- 1 Back 11'-6" high by 20'-0" wide, made in 4 sections.
- 2 Sides 11'-6" high by 11'-0" wide, made in 2 sections each.
- 3 Ceiling Borders 3'-0" deep by 21'-0", 22'-0", and 23'-0" wide.

The above equipment to have 50% added fullness of material according to our standard specifications. Curtains to be installed on #500 curved steel cyclorama track. The front curtain to be made of 25 ounce Institute cyclorama to be made of Barclay Cloth. Samples of the above equipment we quote at \$810.85, delivered and installed. Samples of the materials quoted are enclosed.

We appreciate this opportunity to serve you and hope that you will find our quotations sufficiently attractive to award us this business.

Yours very truly,

SOUTHERN DESK COMPANY



Sales Department

Pittsburgh Stage &  
Equipment Studios

PITTSBURGH 1, PA.

25oz.

Quality Institute

Color Uplow

601 Red

Width Flameproof

Pittsburgh Stage &  
Equipment Studios

PITTSBURGH 1, PA.

Quality Barclay

Color Cloth

Width Grey  
Flameproof

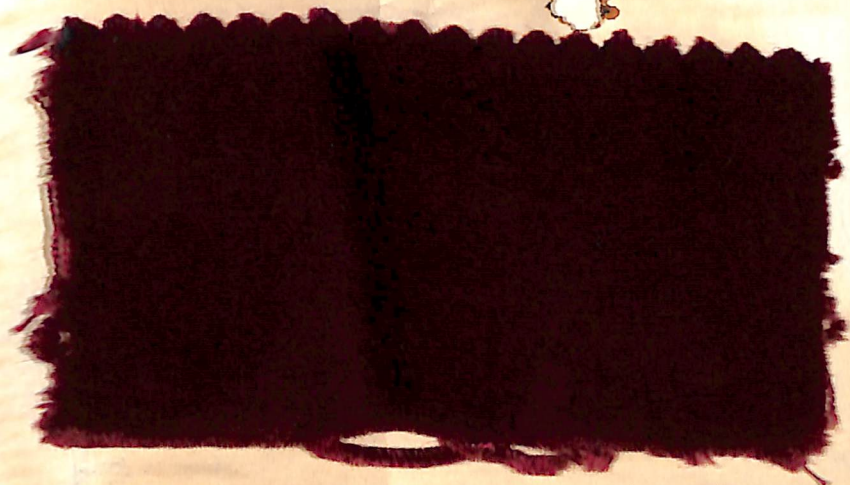




Pittsburgh Stage &  
 Equipment Studios  
 PITTSBURGH 1, PA.  
 Quality *Barley*  
 Cloth  
 Color *Beige*  
 Width *flameproof*



Pittsburgh Stage &  
 Equipment Studios  
 PITTSBURGH 1, PA.  
 Quality *25oz*  
 Institute  
 Color *Woolen*  
 Royal Blue  
 Width *flameproof*



# Hubert Mitchell

*Industries*

INCORPORATED  
MANUFACTURERS OF

**COMPLETE STAGE EQUIPMENT**

HARTSELLE, ALABAMA

**601 Red**

**Balboa Velour -**

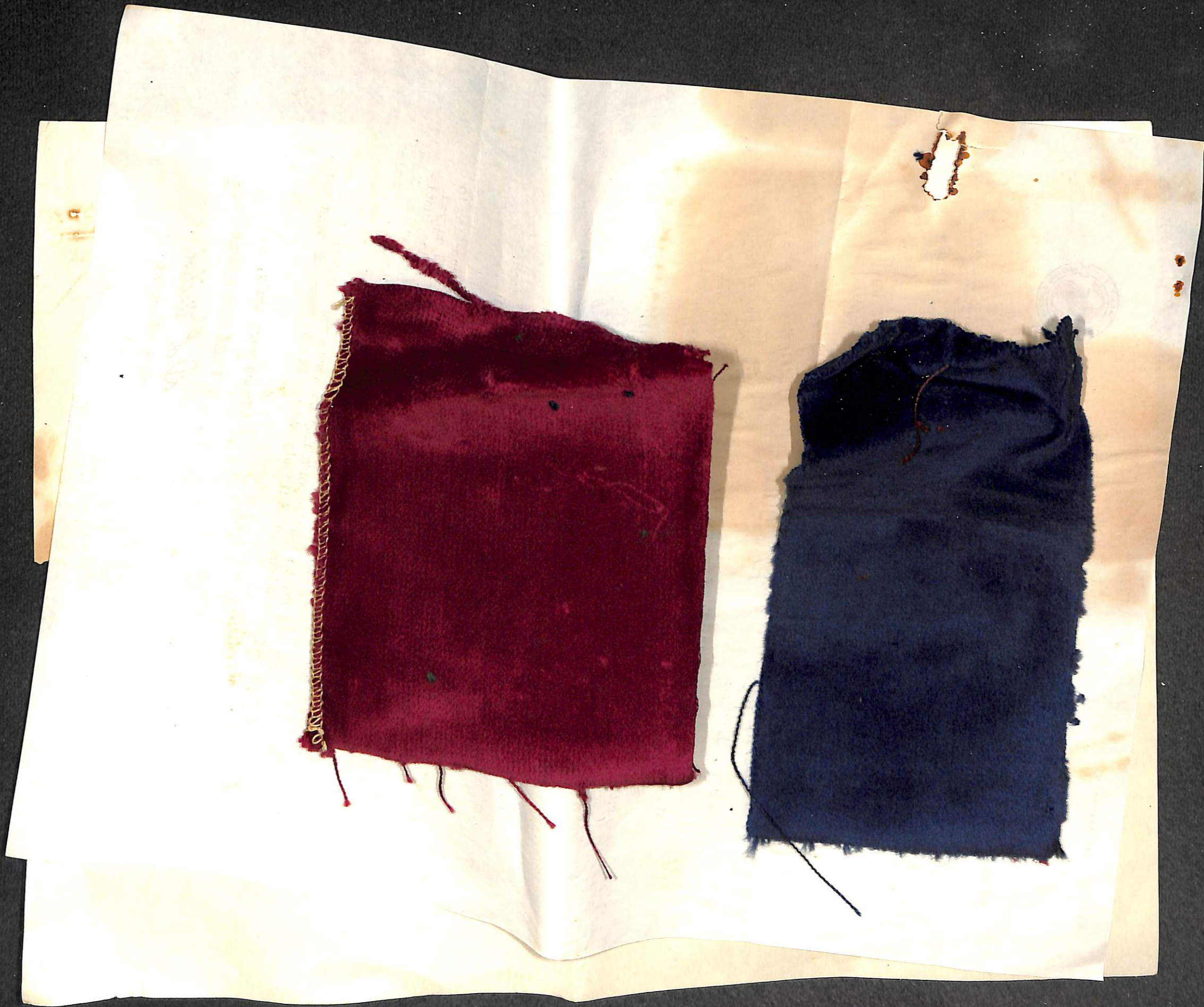
**Available in all colors**

**This sample not**

**flameproofed**

**Hubert Mitchell**  
*Industries*  
INCORPORATED  
MANUFACTURERS OF  
**COMPLETE STAGE EQUIPMENT**  
HARTSELLE, ALABAMA  
Saluda Velour - .61 Regatta Blue  
Available in all colors  
This sample is not flameproofed





**PROPOSAL**

Quotation No. A-1824

Sheet 1 of 1 sheets

**From**  
*Flowers School Equipment Company, Inc.*

327 WEST MAIN STREET  
Richmond 20, Virginia

TO

Mr. O. L. Emerick, Supt.  
Leedown County School Board  
Leesburg, Virginia

Date:  
May 23, 1951

QUOTED as stated.....

INQUIRY: .....

SUBJECT

Arcola School  
Leesburg, Va.  
STAGE CURTAIN

Terms: see below  
From date of each shipment:  
legal rate of interest charged on  
past due accounts.

Item	Quantity	DESCRIPTION	Unit Price	Total
	1	As per your request of the 17th, we are pleased to quote you as follows:  Front StageCurtain, manufactured of Saluda Velour, made in two sections, each section 13'-6" wide x 12'-8" high, including 50% fullness, without valance, including #170 Steel Track, Flame-proofed, delivered and installed for sum of;	\$ 363.25	
	1	Rfont Stage Curtain, same as above, except to include valance, of same material, 2'-6" deep x 23'-0" wide, delivered and installed for sum of;  Prices quoted above are FIRM, subject to acceptance within 10 days.  Shipment Approximately 30 days after receipt of order and verification of sizes.  Samples of available saludavelour attached.	368.88	

This quotation is made subject to conditions and stipulations printed on reverse side of sheet. PLEASE READ CAREFULLY.

Respectfully submitted  
FLOWERS SCHOOL EQUIPMENT COMPANY

By: *I. W. Alley*  
I. W. Alley Sales Engineer

Return this Copy  
to

Re-Quotation No. 1824  
Sheet 1 of 1 sheets

*Flowers School Equipment Company, Inc.*

327 WEST MAIN STREET  
Richmond 20, Virginia

FROM

Mr. O. L. Emerick, Supt.  
Loudoun County School Board  
Leesburg, Virginia

Date:

May 23, 1951

QUOTED as stated.....

INQUIRY: .....

SUBJECT

Areola School  
Leesburg, Va.  
STAGE CURTAIN

Terms: **see below**.....

From date of each shipment.  
legal rate of interest charged on  
past due accounts.

SHIP THE FOLLOWING

Item	Quantity	DESCRIPTION	Unit Price	Total
	1	As per your request of the 17th, we are pleased to quote you as follows:  Front StageCurtain, manufactured of Saluda Velour, made in two sections, each section 13'-6" wide x 12'-8" high, including 50% fullness, without valance, including #170 Steel Track, Flame-proofed, delivered and installed for sum of;		\$ 363.25
	1	Front Stage Curtain, same as above, except to include valance, of same material, 2'-6" deep x 23'-0" wide, delivered and installed for sum of;  Prices quoted above are FIRM, subject to acceptance within 10 days.  ShipmentApproximately 30 days after receipt of order and verification of sizes.  Samples of available saludavelour attached.		368.88

In signing this order it is agreed that all conditions in Flowers School Equipment Company's quotation bearing the same number as this order are agreed to and are a part of this order.

**Respectfully submitted**

SHIP TO

SIGNED .....

I. W. Alley SalesEngineer

WILLIS O. JONES, JR., PRESIDENT

# Virginia School Equipment Company

INCORPORATED  
DIAL 7-7484

RICHMOND 19, VIRGINIA

111 EAST MAIN STREET

May 23, 1951

Mr. O. L. Emerick, Division Supt.  
Loudoun County School Board  
Leesburg, Virginia

Re: Stage Curtain  
Arcola School

Dear Mr. Emerick:

*Thanks for your invitation to quote on stage curtain for the Arcola School in accordance with the demensions in your letter.*

We propose to furnish 9 full widths of 5 1/4" Velour with 50% fullness made from Saluda Velour at a cost of \$321.00. If Balboa Velour is used, the price will be \$300.00.

This quotation does not include erection but does include 26' of #210 steel and wood track. Erection will be quoted later in the letter.

If a Valance is desired in Saluda Velour, add \$48.00; for Balboa Velour, \$43.00 and if a 4" gold fringe is desired, add \$13.00.

If you elect to have our men install the stage curtain, that will \$35.00 extra without an additional charge for hanging the Valance.

*Samples of the materials are enclosed. The samples are not guaranteed out the installation would be. We are also enclosing an artist's sketch of what we propose to furnish.*

Very truly yours,

VIRGINIA SCHOOL EQUIPMENT COMPANY, INC.

321 48  
35  
404.



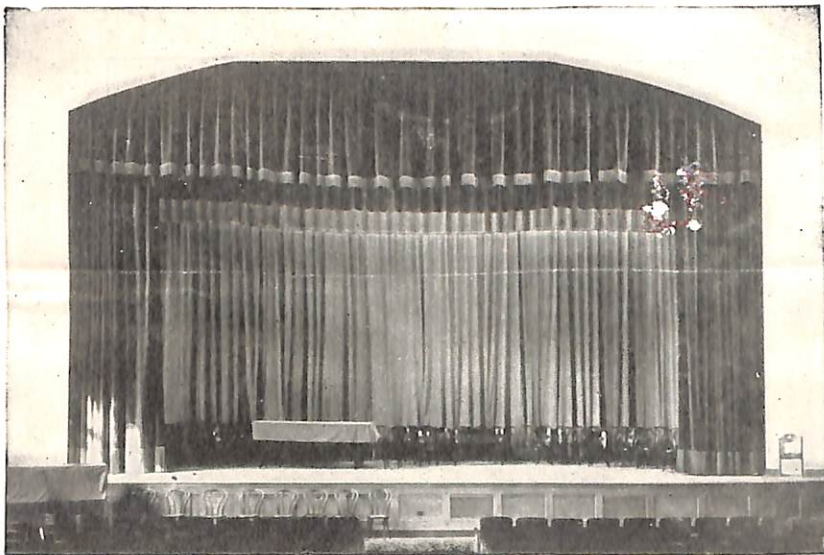
# Stage Equipment

*Beautiful, Dignified  
Mastercraft*

Complete stage equipment service including front curtain, valance, cyclorama, stage draperies, scenery. Auditorium window drapes.



Number 475



Number 405

*Authentically Designed  
Conservatively Styled  
Properly Installed  
Reasonably Priced*



RALEIGH, N. C.

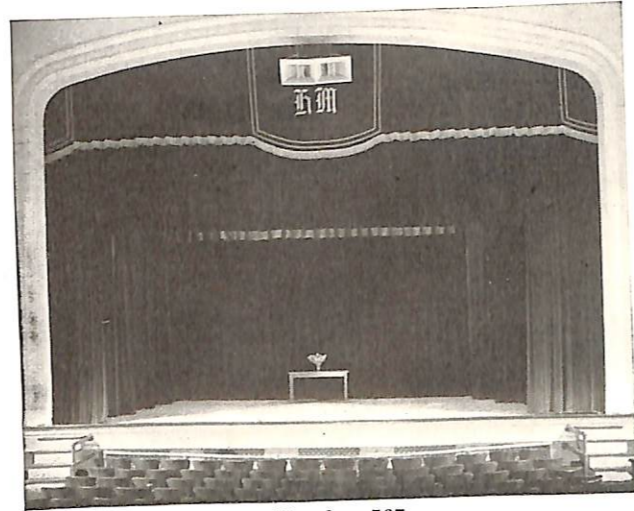
*National Film Service*  
**NATIONAL SCHOOL SUPPLY CO. INC.**

NEW YORK, N. Y.

RICHMOND, VIRGINIA

## Typical Stage Settings and Designs

THEATRES — SCHOOL AUDITORIUMS — GYMS — CHURCHES — CLUBS



Number 567

*"Good taste is not a matter of opinion but a matter of knowledge. There are certain well established principles of good design with which an article must conform to be acceptable."*

—Edna Woolman Chase

### Mastercraft DRAPERIES

Custom made to fit individual needs. Available for both arched and straight windows. Mounted on special tracks for easy operation. Ample lappage and fullness.

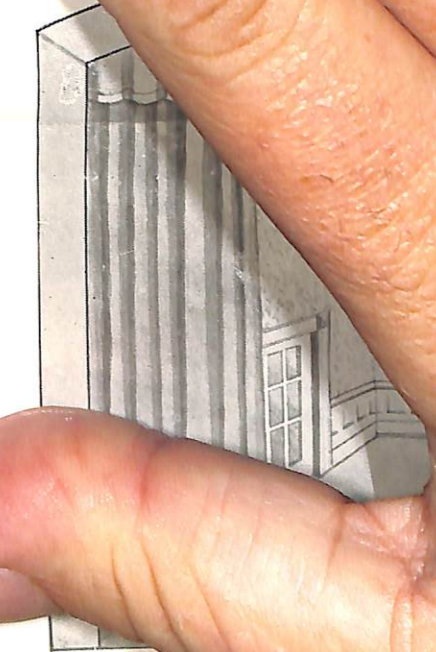
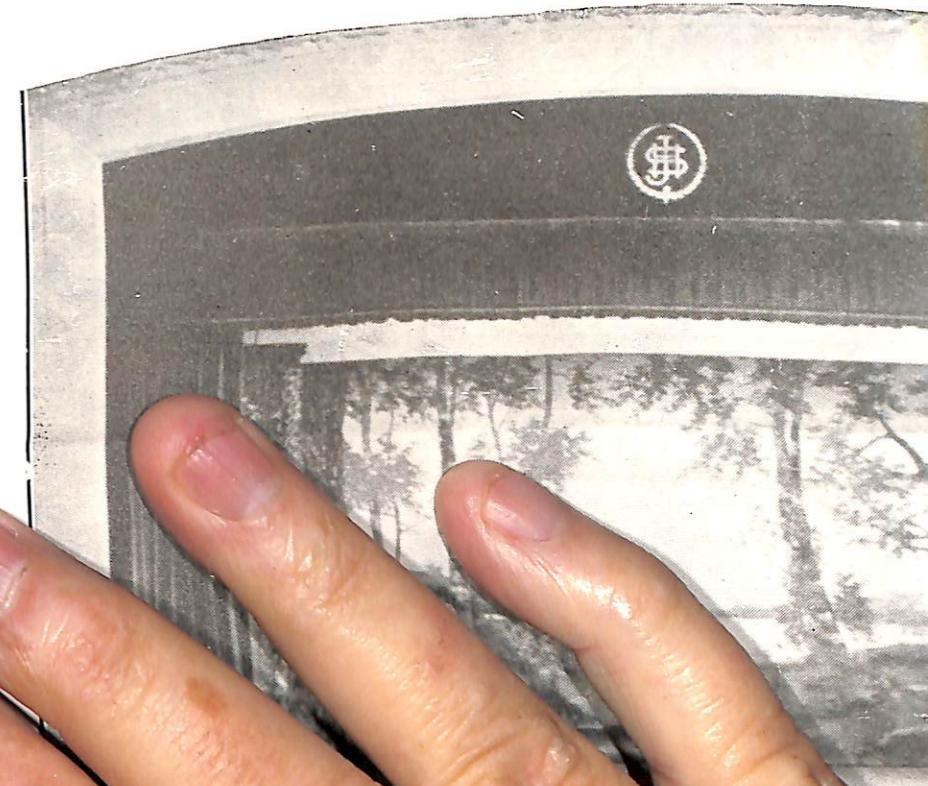


Number 381



Number 465—Front Velour Curtain and Cyclorama. . . Showing Exterior Back Drop.

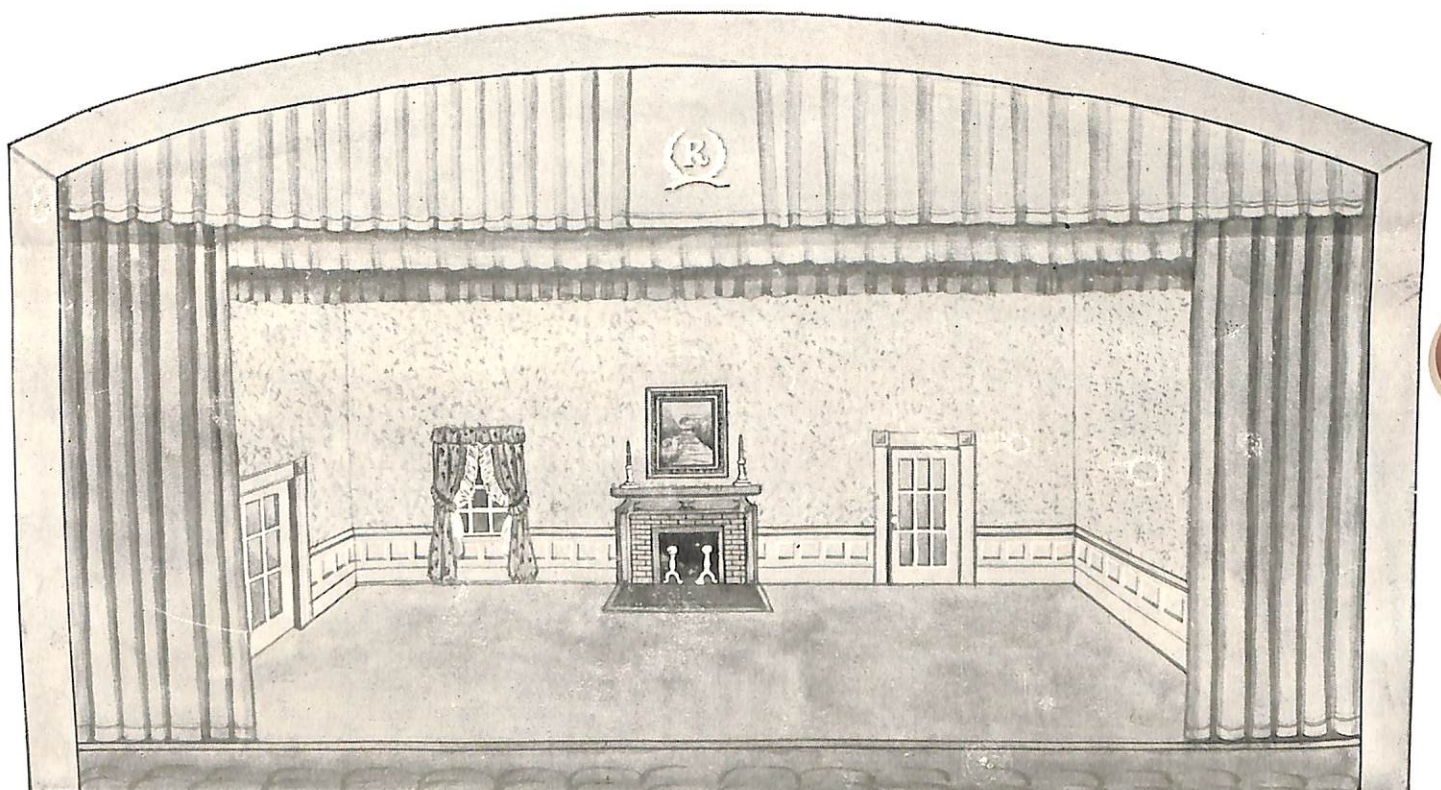
## Appropriate Scenic



# Appropriate Scenic Designs



Number 453—Woodland Back Drop With Wings to Match



Number 472—Scenery and Stage Settings Designed for Your Stage

**Settings and Designs**

MS — GYMS — CHURCHES — CLUBS

"Good taste is not a matter of opinion but a matter of knowledge. There are certain well established principles of good design with which no article must be acceptable."

—Edith Woolman Chase



umber 35



Exterior Back Drop.

**THERE IS A DIFFERENCE**

Select

**MASTERCRAFT STAGE EQUIPMENT AND DRAPERIES**

**MASTERCRAFT IMPERIAL**

The very best in quality — hand sewed — triple reinforced — Sunfast Velours — Moth Proofed — Flame Proofed—UNCONDITIONALLY GUARANTEED—One year free adjustment service.

**MASTERCRAFT SUPERIOR**

Another outstanding quality of stage equipment in the MASTERCRAFT line. Superior in quality, workmanship and design, yet at prices comparable to ordinary stage equipment. Specifications closely parallel Mastercraft Imperial quality.

**MASTERCRAFT STANDARD**

Designed for thrift and economy—an excellent value at lowest prices—manufactured with Mastercraft "know how" and quality fabrics.

Ask about DURO-TEX. The Heaviest, Finest Quality, and most Durable Velour available.

Make your stage more adaptable with

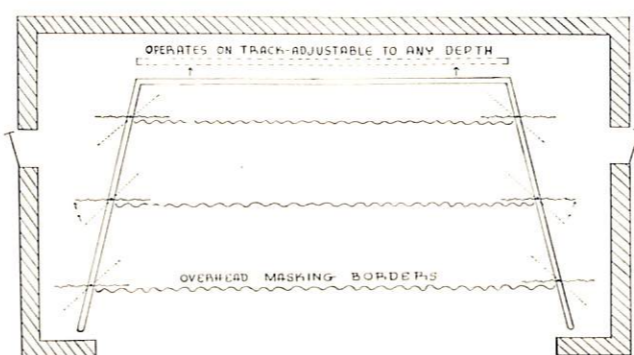
**"National" Revolv-O-Wing Cycloramas and Settings**

Within a few seconds you may:

- 1—Change your regular cyclorama to a more elaborate and more flexible setting.
- 2—Completely reverse wings, permitting two-tone settings.
- 3—Change entire color scheme.

Simple in Operation

Rigging Costs No More



Completely Reversible

Stays in Any Position

**Let National Plan Your Stage - We Save You Money**

Samples upon request . . . Plans, suggested designs, consultation service and quotations furnished without cost or obligation.

**STAGE LIGHTING EQUIPMENT**



No. 12 S



No. 12

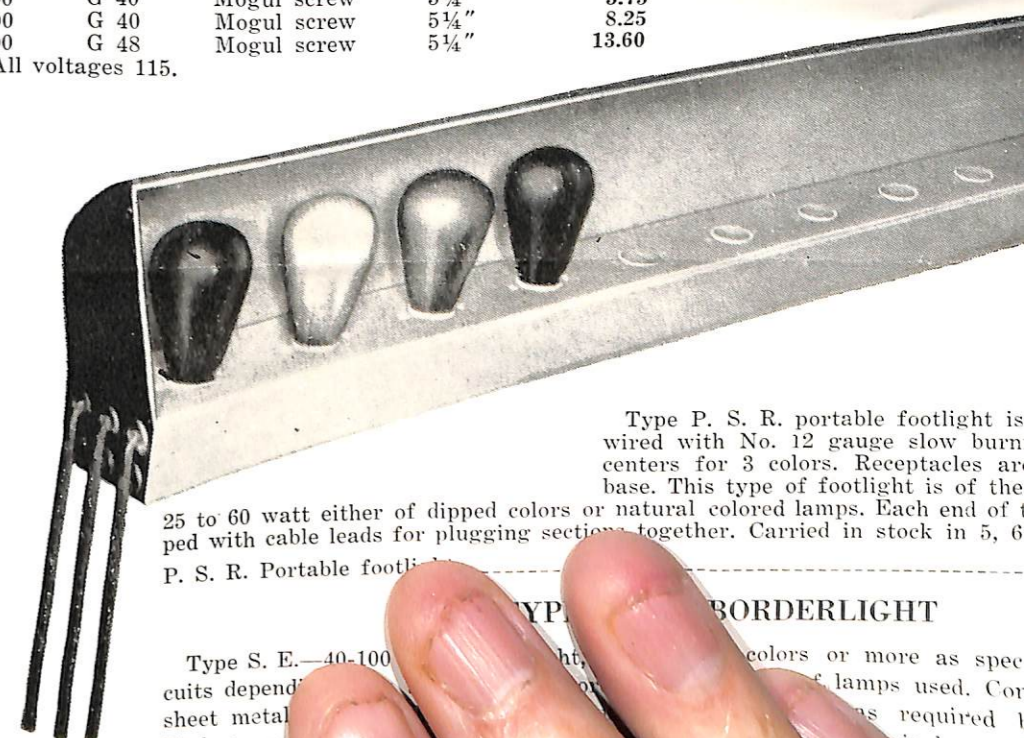
- No. 12 For Spot up to 50 feet
- 12 500-1000 watt spotlight equipped with lens and asbestos lead wires -----
- 12 T. B. 500-1000 watt spotlight equipped with mounting, yoke, 6 inch lens and asbestos lead wires -----
- 12 W. B. 500-1000 watt spotlight equipped with asbestos lead wires and wall bracket -----
- 12 S. 500-1000 watt spotlight equipped with full 15 ampere connector, 25 feet of ap cable hook and 6 inch lens -----

- 1000-2000 WATT SPOTLIGHT
- For projection of spot up to 70 feet -----
- No. 16. With pipe clamp ----- \$40.80
- No. 75. 5 Hole Color Wheel ----- \$ 6.60

**LAMPS FOR SPOTLIGHTS**

Wattage	Style	Bulb	Style Base	Light Center	Price
500	G 40	Mogul screw	4 1/4"	4 1/4"	\$3.00
1000	G 40	Mogul screw	4 1/4"	4 1/4"	5.75
1000	G 40	Mogul screw	5 1/4"	5 1/4"	5.75
1500	G 40	Mogul screw	5 1/4"	5 1/4"	8.25
2000	G 48	Mogul screw	5 1/4"	5 1/4"	13.60

All voltages 115.



Type P. S. R. portable footlight is wired with No. 12 gauge slow burn centers for 3 colors. Receptacles are base. This type of footlight is of 25 to 60 watt either of dipped colors or natural colored lamps. Each end of footlight is equipped with cable leads for plugging sections together. Carried in stock in 5, 6, 7, 8, 9, 10, 11, 12, 13, 14, 15, 16, 17, 18, 19, 20, 21, 22, 23, 24, 25, 26, 27, 28, 29, 30, 31, 32, 33, 34, 35, 36, 37, 38, 39, 40, 41, 42, 43, 44, 45, 46, 47, 48, 49, 50, 51, 52, 53, 54, 55, 56, 57, 58, 59, 60, 61, 62, 63, 64, 65, 66, 67, 68, 69, 70, 71, 72, 73, 74, 75, 76, 77, 78, 79, 80, 81, 82, 83, 84, 85, 86, 87, 88, 89, 90, 91, 92, 93, 94, 95, 96, 97, 98, 99, 100.

Type S. E.—40-100 watt footlight is wired with No. 12 gauge slow burn centers for 3 colors or more as specified. Receptacles are wired for 3 colors or more as specified. Lamps used, Cor. sheet metal. Receptacles are wired for 3 colors or more as specified. Sockets are wired for 3 colors or more as specified. Painted with black enamel. Carried in stock in 5, 6, 7, 8, 9, 10, 11, 12, 13, 14, 15, 16, 17, 18, 19, 20, 21, 22, 23, 24, 25, 26, 27, 28, 29, 30, 31, 32, 33, 34, 35, 36, 37, 38, 39, 40, 41, 42, 43, 44, 45, 46, 47, 48, 49, 50, 51, 52, 53, 54, 55, 56, 57, 58, 59, 60, 61, 62, 63, 64, 65, 66, 67, 68, 69, 70, 71, 72, 73, 74, 75, 76, 77, 78, 79, 80, 81, 82, 83, 84, 85, 86, 87, 88, 89, 90, 91, 92, 93, 94, 95, 96, 97, 98, 99, 100.

# STAGE LIGHTING EQUIPMENT



No. 12 S



No. 12



No. 12 T. B.

No.	For Spot up to 50 feet	
12	500-1000 watt spotlight equipped with pipe clamp, 6 inch lens and asbestos lead wires -----	\$24.00
12 T. B.	500-1000 watt spotlight equipped with base for table mounting, yoke, 6 inch lens and asbestos lead wires-----	\$24.00
12 W. B.	500-1000 watt spotlight equipped with 6 inch lens, yoke, asbestos lead wires and wall bracket-----	\$24.00
12 S.	500-1000 watt spotlight equipped with telescoping stand, full 15 ampere connector, 25 feet of approved stage cable, cable hook and 6 inch lens -----	\$36.00

## 1000-2000 WATT SPOTLIGHTS

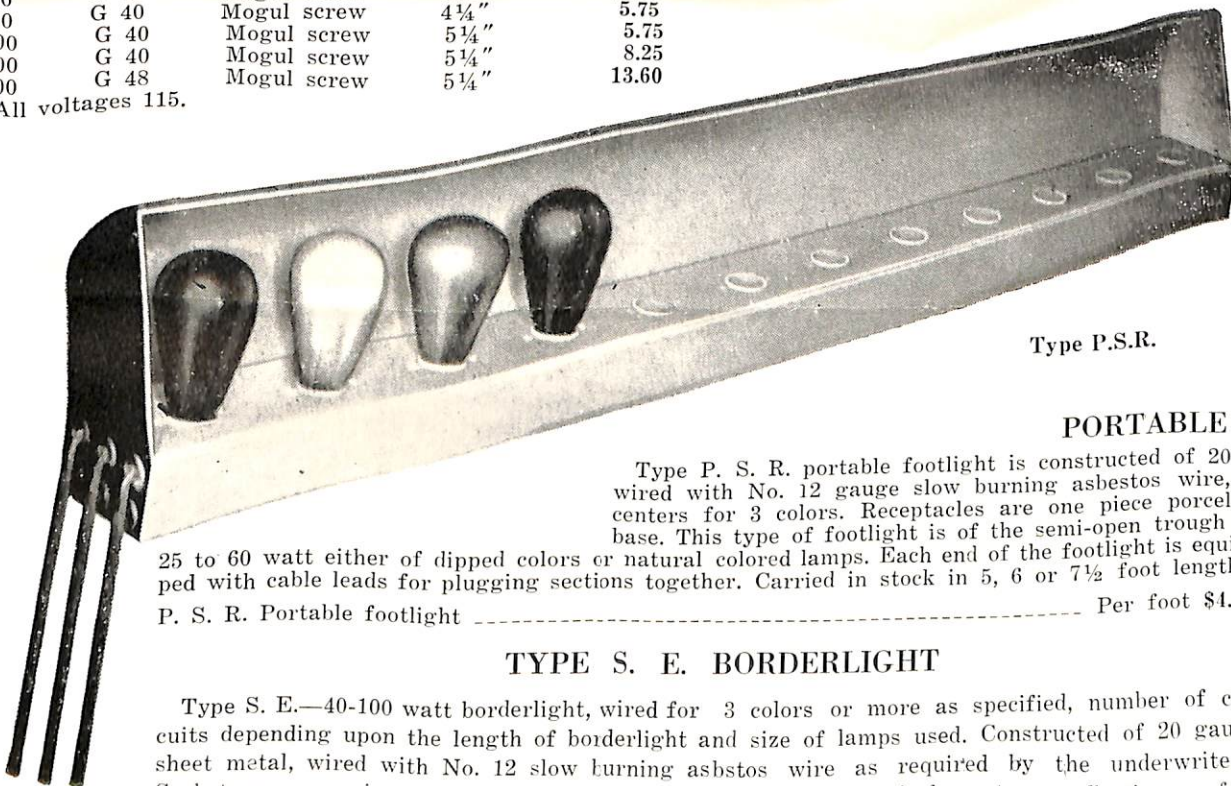
For projection of spot up to 70 feet ---16" Hood			
No. 16. With pipe clamp -----	\$40.80	16 S. With telescoping stand- ards 25 stage cable -----	\$51.00
No. 75. 5 Hole Color Wheel-----	\$ 6.60	16 T. B. With table bracket---	\$40.80

Lamps Not Included in Above Prices

## LAMPS FOR SPOTLIGHTS

Wattage	Style Bulb	Style Base	Light Center	Price
500	G 40	Mogul screw	4 3/4"	\$3.00
1000	G 40	Mogul screw	4 1/4"	5.75
1000	G 40	Mogul screw	5 1/4"	5.75
1500	G 40	Mogul screw	5 1/4"	8.25
2000	G 48	Mogul screw	5 1/4"	13.60

All voltages 115.



Type P.S.R.

## PORTABLE FOOTLIGHTS

Type P. S. R. portable footlight is constructed of 20 gauge sheet iron, wired with No. 12 gauge slow burning asbestos wire, outlets on 4 inch centers for 3 colors. Receptacles are one piece porcelain medium screw base. This type of footlight is of the semi-open trough style for lamps of 25 to 60 watt either of dipped colors or natural colored lamps. Each end of the footlight is equipped with cable leads for plugging sections together. Carried in stock in 5, 6 or 7 1/2 foot lengths.

P. S. R. Portable footlight ----- Per foot \$4.00

## TYPE S. E. BORDERLIGHT

Type S. E.—40-100 watt borderlight, wired for 3 colors or more as specified, number of circuits depending upon the length of borderlight and size of lamps used. Constructed of 20 gauge sheet metal, wired with No. 12 slow burning asbestos wire as required by the underwriters. Sockets are one piece porcelain, medium screw base type on 4 inch centers; reflecting surface painted with our special white paint, outside black. Furnished with scenery guards and chain hangers. S. E. Borderlight as specified ----- Per foot \$4.00



Write For Complete Lighting Equipment Catalog.

# RECENT *Mastercraft* INSTALLATIONS

## NORTH CAROLINA

First Presbyterian Church, Raleigh  
Edenton Street Methodist Church, Raleigh  
Raleigh Woman's Club  
Chapel Hill High School  
Calvary Episcopal Church, Tarboro  
Cleveland High School  
Booker T. Washington High School, Clarkton  
Lexington High School  
Halifax County Training School  
Hoke County High School  
Guilford High School  
Leaksville City Schools  
Rutherfordton-Spindale High School  
Rohanen Elementary School, Rockingham  
University of North Carolina (Carolina Playmakers)  
North Carolina State College  
Morehead City Schools (2 units)  
Dunn City Schools (3 units)  
Kinston City Schools (3 units)  
Elizabeth City Schools (3 units)  
Harnett County Training School  
Appalachian Hall, Asheville  
Capitol Theatre, Kenansville  
Roanoke Rapids High School  
Newton Elementary School  
Boyden High School, Salisbury  
Raleigh City Schools (6 units)  
Rocky Mount City Schools (3 units)  
Asheville City Schools (4 units)  
Durham City Schools (5 units)  
Charlotte City Schools (3 units)  
Morningside School, Statesville  
Shawtown School, Lillington

## VIRGINIA

Charles City Elementary School  
Jarratt High School  
Lunenburg County Board of Education  
Pearisburg High School  
Kenbridge High School  
Lawrenceville High School  
Dublin High School  
Poquoson High School, Jeffs  
Renan High School, Gretna  
Robert E. Lee School, Richmond  
Millsboro Springs School  
Veterans Hospital, Roanoke  
West Point High School  
Wilson Memorial High School, Fisherville  
South Martinsville Elementary School  
Spencer-Penn High School  
Virginia High School, Bristol  
Spring Garden School, Chatham  
Culpepper High School  
Hillsville High School  
Sperryville High School  
Brandy High School  
Arlington Methodist Church  
Buchanan High School  
Brownsburg High School  
Charlotte County Schools (4 units)  
Deep Creek High School, Portsmouth  
First Baptist Church, Winchester  
Henrico County Schools (4 units)  
Norview High School, Norfolk  
Roanoke City School (3 units)  
Norfolk City Schools (5 units)  
Richmond City Schools (3 units)

*For Your Protection—WE FLAME-PROOF  
MOTHPROOF AND DE-INSECT  
Old or New Stage Equipment and Drapery Installations.  
Flame-Proofed Samples and Estimates Upon Request.*

## KENTUCKY

Frankfort High School  
St. Charles School  
Livermore High School  
Garth High School, Georgetown  
Whitesburg High School  
Ashland High School  
Shelby School, Lexington  
Darnall Canteen Co., Danville  
Somerset High School  
Springfield High School  
Sisters of Good Shepherd, Louisville  
West Point High School  
Bourbon High School, Paris  
Georgetown College  
Veterans Hospital, Lexington  
Millington High School  
Grapevine School, Phyllis  
Hebron High School  
Jackaman High School, Columbia  
Oddsville High School  
Oneida Institute  
Olive Hill High School  
Poole High School  
Pikeville College Training School  
Pleasant Home School, Gratz  
Rockport High School  
Stanly Graded School  
Temple Hill High School  
Tolu High School

## OTHER STATES

Oak Ridge Atomic Center (4 units), Oak Ridge, Tenn.  
Lost Creek High School, Lost Creek, W. Va.  
Urbana School, Urbana, Ohio  
Florida State School for Deaf & Blind, St. Augustine, Fla.  
Convent of Mary Immaculate, Key West, Fla.  
Moscoe School, Milroy, Ind.  
Scarbro Elementary School, Scarbro, W. Va.  
Oviedo High School, Oviedo, Fla.  
Riverside Military Academy, Gainesville, Ga.  
Hughesville High School, Hughesville, Md.  
New Brockton High School, New Brockton, Ala.  
Orlando Public Schools (4 units), Orlando, Fla.  
Deland High School, Deland, Fla.  
Elberfeld High School, Elberfeld, Ind.  
Darien High School, Darien, Ga.  
Helena Junior High School, Helena, Ala.  
Fort Meade Public Schools, Fort Meade, Fla.  
Palatka Elementary School, Palatka, Fla.  
Daytona Beach Schools (5 units), Daytona Beach, Fla.  
Azalia School, Elizabethtown, Ind.  
Gentryville Graded School, Gentryville, Ind.  
Ponce de Leon School, Decatur, Ga.  
The Hobby Horse, Cambridge, Md.  
Eufaula High School, Eufaula, Ala.  
Dixieland Public Schools, Lakeland, Fla.  
Hoppers Creek High School, Fishing Creek, Md.  
Leesburg High School, Leesburg, Fla.  
Hardinsburg High School, Hardinsburg, Ind.  
Division Elementary School, Key West, Fla.  
Windham High School, Windham, Ohio

**We invite you to write any of these schools regarding our work. If you wish to make personal inspection we will mail lists of nearby installations from the more than 2000 satisfied users of Mastercraft Stage Equipment and Draperies.**

**CENTRALIZED SOUND SYSTEMS . . . . National's sound equipment installations are equally outstanding.**  
*The results of skilled sound engineers with years of experience and "Know How."*

## NATIONAL SUPERIOR SPECIFICATIONS

GENERAL

The contractor shall include the furnishing and erecting of all stage curtain equipment in these specifications.

WORKMANSHIP

All work shall be done in a first class manner and in accordance with the latest approved practices. All detail shall be left in a finished condition, ready to use. Cutting of wall or ceiling, where necessary, shall be done with the least damage and patching shall be done by this contractor and completed in a neat and slightly manner, replacing any damaged work.

SCOPE OF WORK

The contract shall include all labor, materials, tools, transportation and equipment necessary for the complete installation of all equipment. The contractor shall take all necessary measurements on the site before starting work as the customer will not be liable for any incorrectness in measurements. National School Supply Co., Inc. shall furnish and erect all supports necessary for hanging equipment that are not incorporated in the drawing.

GUARANTEE

1. Velour used shall be Guaranteed Sunfast.
2. All fabrics will be flameproofed with materials approved by the National Board of Underwriters.
3. All velour fabric will be given Moth Proof treatment and bear a Written Guarantee against damage from moths for a period of five (5) years.
4. National School Supply Co., will give one year's free adjustment service on Stage Curtain, Cyclorama and Drapes.

MATERIAL

Velour for prescenum valance and front draw curtain shall be guaranteed sunfast. The velour used shall be very closely woven, high tensile strength velour as Saluda from Piedmont Plush Mills, or approved equal.

Sateen used for lining of drapes shall be heavy grade of sateen as Liberty from Mendelsohn Fabrics Corporation, or approved equal.

SPECIFICATIONS CONTINUED

Cyclorama shall be manufactured of the same materials as the front curtain. Rigging for the velour curtain shall be Allentown Heavy Duty Silent Steel Track, to be equipped with the necessary cables, pulleys and adjustable floor block.

Rigging for cyclorama shall be Kroder Reubel oval tube track. Carriers used shall be double roller type enclosed in path of track. Equal and superior to Kirsch.

VELOUR FRONT CURTAIN

This curtain shall be manufactured of a quality of velour as hereinbefore specified. Velour front curtain shall be made of two sections. Each half to have 60% fullness added and pleated in. Two feet center lappage. Curtain shall be hemmed across top and reinforced with 1/4 inch jute upholstery webbing, triple stitched to velour and holding pleats in position. Hemmed across bottom with 1/4 inch hem. Center hem shall be faced back 12 inches and there shall be No. 2 brass grommets reinforced in the upholstery webbing, approximately 11 inches apart and in line with each pleat. Trim chains shall be fastened to the grommets by heavy "S" hooks, and thence to the carriers in traverse track swivel links. The width of curtain shall be same as shown on plans.

VALANCE

This unit shall be of the same quality and color as that used for the velour front curtain. It shall be the width of the proscenium opening plus 6 inch lappage on each side. The valance shall be made up with 60% fullness.

Installed complete with necessary cable, battens and chains. Chains used shall be 2/0 brown pattern and shall be strong and rigid enough to hold several times the weight of this unit. Chain used shall have a tensile strength of not less than 1215 lbs. Top of valance shall be reinforced with 1/4 inch webbing double stitched to velour. Bottom of valance shall be hemmed with 3 inch hem and trimmed with 1/4 inch silk Bullion fringe. Shall have monogram subject to customer's selection.

TRACK

Track for velour curtain shall be that hereinbefore specified under Rigging. It shall be made in two sections free from any joints. Track shall be suspended from rigging left with No. 2/0 brown pattern chain or equal. Tensile strength of not less than 1215 lbs. These chains shall be attached to steel clamps spaced on track. Each chain shall be complete with turn buckles.

COPY



SPECIFICATIONS CONTINUED

SPECIFICATIONS CONTINUED

CYCLORAMA

This unit shall be manufactured of the quality drapery fabric as hereinbefore specified, of such color as the customer may desire. To consist of one curtain across back made in two sections manufactured in 50% fullness.

The side arms shall be made in two sections for each side of the stage.

Entire cyclorama set shall be hemmed with a 1/4 inch hem along sides and top of each section. Bottom of each section shall be hemmed with a 1/4 inch hem.

CYCLORAMA SKY BORDERS

There shall be three cyclorama borders manufactured from the same quality and color drapery material as that used for the cyclorama and hereinbefore specified. This unit shall be manufactured 60% fullness, hemmed and pleated across top. Grammets and tie lines shall be spaced approximately 11 inches apart. Border shall be hemmed across bottom with 1/4 inch hem. Cyclorama borders shall be installed on straight dry seasoned wood batten and suspended from rigging loft with 2/0 brown chain

TRACK

The cyclorama shall be installed on Knoder Reubel oval tube metal track as hereinbefore specified, equal to Kirsch.

Quotation per above specifications, and measurements sent in by Supt. O. L. Emerick, \$404.93

This price does not include the Cyclorama, just the front curtain with the curtain accessories, such as Valance, Track and accessories Pull Cords etc.

NATIONAL SCHOOL SUPPLY COMPANY, INC.

*C. A. Majure*

C. A. Majure  
Manager

COPY

DIAL 2-2808

RALEIGH, N.C. 14 GLENWOOD AVE.  
RICHMOND, VA. 202 E. CARY ST.  
LOUISVILLE, KY. 422 W. BRECKINRIDGE

NATIONAL FILM SERVICE  
NATIONAL SCHOOL SUPPLY  
202 EAST CARY STREET  
RICHMOND, VA.

C. A. MAJURE

Richmond :: Louisville :: Raleigh :: New York

# National School Supply Co. Inc.

## National Film Service

DISTRIBUTORS OF 16 MM FILMS AND AUDIO VISUAL AIDS

THE SOUTH'S LARGEST



14 GLENWOOD AVE.

TELEPHONE 2-2808

RICHMOND, VA.

REPLY TO: 202 E. CARY STREET  
RICHMOND, VA.

May 18, 1951

E. E. JACK CARTER  
PRESIDENT

Mr. O. L. Emerick  
Division Superintendent  
Leesburg, Virginia



Dear Mr. Emrick

Thank you for requesting quotation on the Arcola School stage. Enclosed you will find our official quotation on this job.

We are sending along samples of material to be used in the manufacture of this curtain.

If we have failed to give you all the information needed will you please do not hesitate to call on us.

Looking forward to being of service to you.

Very cordially yours

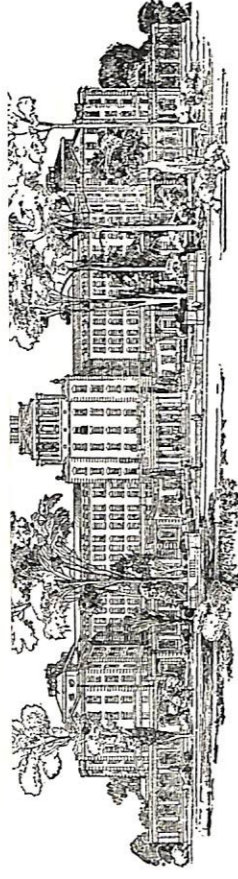
NATIONAL SCHOOL SUPPLY COMPANY

*C. A. Majure*  
C. A. Majure  
Manager

CAM/c



FILM RENTAL LIBRARY \* ENTERTAINMENT \* EDUCATIONAL \* RELIGIOUS \* COMMERCIAL FILMS  
STAGE EQUIPMENT \* AUDITORIUM DRAPERIES \* WINDOW SHADES \* INSTITUTIONAL EQUIPMENT  
MOTION PICTURE EQUIPMENT \* SOUND SYSTEMS \* RECORDERS \* AUDIO-VISUAL EQUIPMENT



*The Aetna Casualty and Surety Company*

*Hartford, Connecticut*

CONTRACT BOND 29 S 12133

**Know All Men by These Presents,**

1 That we, .....  
2 .....  
3 .....  
4 of .....  
5 (hereinafter called the Principal), as Principal, and **The Aetna Casualty and Surety Company**, of Hartford,  
6 Connecticut (hereinafter called the Surety), as Surety, are held and firmly bound unto .....  
7 Board of Education of the County of Loudoun, Virginia .....  
8 .....  
9 (hereinafter called the Obligee) in the sum of Sixty-Four Thousand and no/100 ..... Dollars (\$.....64,000.00.....),  
10 .....  
11 for the payment of which said Principal and Surety bind themselves, their heirs, administrators, executors, successors  
12 and assigns, jointly and severally, firmly by these presents.  
13 **Whereas**, The Principal has entered into a written contract dated ..... March 1,  
14 ..... 1951, with the Obligee, ..... for construction of an addition to the Arcola  
15 School, Loudoun County, Virginia .....  
16 .....  
17 .....  
18 .....

19 a copy of which is hereby referred to and made a part hereof.  
20 **Now Therefore**, The condition of this obligation is such, that if the Principal shall indemnify the Obligee against  
21 any loss directly arising by reason of the failure of the Principal to faithfully perform said contract, then this obligation  
22 shall be void; otherwise it shall remain in full force and effect.

23 **Provided**, however, and upon the following express conditions, which shall be conditions precedent to any right  
24 of recovery hereunder:

25 **First:** That, in the event of any default on the part of the Principal, a written statement of the particular  
26 facts showing such default and the date thereof shall be immediately delivered to the Surety, by registered mail, at its  
27 Home Office in the City of Hartford, Connecticut; that, in the event of any default, the Surety shall have the right at its  
28 option to proceed, or procure others to proceed, with the performance of such contract; that, if the Surety does proceed or  
29 procure others to proceed with the performance of such contract, any and all moneys or property that may at the time  
30 of such default be due, or that thereafter may become due, under said contract shall become payable to the Surety and  
31 shall be paid to it; and the Surety shall be subrogated to all of the rights of the Principal.

32 **Second:** That no action, suit or proceedings, except as hereinafter set forth, shall be had or maintained against  
33 the Surety on this instrument unless the same be brought or instituted and process served upon the Surety within six  
34 months after completion of the work mentioned in said contract, whether such work be completed by the Principal,  
35 Surety or Obligee; but if there is any maintenance period provided in the contract, and for which said Surety is liable,  
36 an action for maintenance may be brought within three months from the expiration of the maintenance period, but  
37 not afterwards. If there is a maintenance period exceeding five years provided in the contract, for which the Surety  
38 would be liable were it not for the reservation here expressed, it is agreed that said Surety nevertheless shall not be  
39 liable for any maintenance period exceeding five years and that, in such case, no action for maintenance may be brought  
40 hereunder after the expiration of five years and three months from the completion of said work.

41 **Third:** That the Surety shall not be liable for any damages resulting from strikes or labor difficulties, mobs, riots,  
42 fire, the elements, or Act of God, nor for the repair or reconstruction of any work or materials damaged or destroyed by any  
43 of such causes.

44 **Fourth:** That the Obligees shall faithfully perform all the terms, covenants and conditions of such contract on  
45 the part of the Obligees to be performed; that the Obligees shall retain that proportion, if any, which such contract specifies