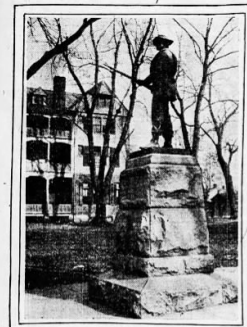


THE SUNDAY STAR, WASHINGTON, D. C. DECEMBER 12, 1915—PART 2

Washington's Neighbors--Loudoun County, Virginia

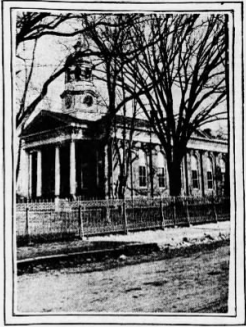


WASHINGTON MONUMENT IN COURT HOUSE GROUNDS.

Of the original counties of colonial Virginia, Loudoun County is the only one that has remained in its original form. It was created out of a part of Fairfax County in 1757—German immigration in early part of eighteenth century—Pioneers of the section—County played large part in affairs of the Revolution—Over 300,000 acres of farming land—Valuable crops and many good roads—The county seat, Leesburg—Population and value of products.

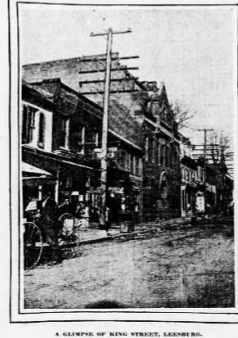
A SECTION noted for agricultural prosperity and the happiness of its people—County Created Out of a Part of Fairfax County in 1757—German Immigration in Early Part of Eighteenth Century—Pioneers of the Section—County Played Large Part in Affairs of the Revolution—Over 300,000 Acres of Farming Land—Valuable Crops and Many Good Roads—The County Seat, Leesburg—Population and Value of Products.

Loudoun County, Virginia, is a section of the State of Virginia, bounded on the north by Loudoun County, on the east by Loudoun County, on the south by Loudoun County, and on the west by Loudoun County. It is a section of the State of Virginia, bounded on the north by Loudoun County, on the east by Loudoun County, on the south by Loudoun County, and on the west by Loudoun County.



LOUDBON COUNTY COURTHOUSE.

The county seat of Loudoun County is Leesburg, a town of about 1,000 people. The county is a section of the State of Virginia, bounded on the north by Loudoun County, on the east by Loudoun County, on the south by Loudoun County, and on the west by Loudoun County.



A STREET IN LEESBURG, VIRGINIA.



LOOKING EAST ON LEESBURG STREET, LEESBURG.

The county seat of Loudoun County is Leesburg, a town of about 1,000 people. The county is a section of the State of Virginia, bounded on the north by Loudoun County, on the east by Loudoun County, on the south by Loudoun County, and on the west by Loudoun County.

The county seat of Loudoun County is Leesburg, a town of about 1,000 people. The county is a section of the State of Virginia, bounded on the north by Loudoun County, on the east by Loudoun County, on the south by Loudoun County, and on the west by Loudoun County.

The county seat of Loudoun County is Leesburg, a town of about 1,000 people. The county is a section of the State of Virginia, bounded on the north by Loudoun County, on the east by Loudoun County, on the south by Loudoun County, and on the west by Loudoun County.

The county seat of Loudoun County is Leesburg, a town of about 1,000 people. The county is a section of the State of Virginia, bounded on the north by Loudoun County, on the east by Loudoun County, on the south by Loudoun County, and on the west by Loudoun County.

The county seat of Loudoun County is Leesburg, a town of about 1,000 people. The county is a section of the State of Virginia, bounded on the north by Loudoun County, on the east by Loudoun County, on the south by Loudoun County, and on the west by Loudoun County.

The county seat of Loudoun County is Leesburg, a town of about 1,000 people. The county is a section of the State of Virginia, bounded on the north by Loudoun County, on the east by Loudoun County, on the south by Loudoun County, and on the west by Loudoun County.

The county seat of Loudoun County is Leesburg, a town of about 1,000 people. The county is a section of the State of Virginia, bounded on the north by Loudoun County, on the east by Loudoun County, on the south by Loudoun County, and on the west by Loudoun County.



THE COURTHOUSE OF LEESBURG, VIRGINIA.

SENDING CHRISTMAS GIFTS TO SOLDIERS IN TRENCHES

JUST has many lines of goods such as socks, underwear, handkerchiefs, and other necessities for the soldiers in the trenches. The gifts are being sent to the soldiers in the trenches.

Queer Gifts to Royalty.

IT was an occasion which was witnessed with interest by the British people. The gifts were sent to the royalty.