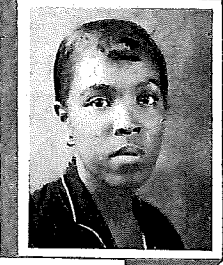


C *Young Women*



CSK
 ROBERT COYNE Moore
 116 MARKET STREET, PITTSBURGH, PA.
Rural.
 Rural Club.



CSK
 ELIZABETH CRAIG "Craig"
 535 NORTH STREET, LANCASTER, PA.
Primary.



CSK
 MARIE C. CRONE "Cronie" Moore
 917 WEST FIFTH STREET, HAZLETON, PA.
Intermediate.
 Swimming Club.



CSK
 MYRTLE CRAGG "Cragg" Aryan
 221 CLIVEDEN AVENUE, GLENSIDE, PA.
Primary.
 Glee Club; Hostess Club;
 Montgomery County Club.



CSK
 FRANCES CRAWLEY "Toddie" Aryan
 PICTURE ROCKS, PA.
Primary.
 Glee Club; Orchestra; Y. W. C. A.



CSK
 GLADYS G. CROSS "Gladie" Aryan
 17 EAST PATTERSON STREET, LANSFORD, PA.
Intermediate.
 Y. W. C. A.