

SMITH-MOORE BODY COMPANY

INCORPORATED

Auto Body Builders & Equipment Distributors

HEIL DUMP BODIES

THERMO KING REFRIGERATION

PAINTING AND LETTERING DESIGNS A SPECIALTY

Brook Road at Lombardy St. : Telephone 5-8648

RICHMOND 20, VIRGINIA

May 5, 1953

Mr. O. L. Emerick, Superintendent
Loudoun County Public Schools
Leesburg, Virginia

Dear Mr. Emerick:

It has been called to our attention that several bus body companies are quoting prices on bodies of approximately twenty-four (24) feet in length in which they are furnishing ten rows of seats on each side of aisle. This twenty-four (24) foot body can be mounted on trucks having a wheelbase of 208" to 216". The centers on these bodies are being set with seat centers of 24".

Please be advised that we can furnish our Model 36-240, body 24' 0" long to accommodate ten rows of seats. The seat centers on this model equipped with ten rows of seats will be 24". The prices on the above Model 36-240 with ten rows of seats is as follows:

Model 36-240 - 24' 0" long - 60 Pupil Capacity - Centers 24"

One body	\$1810.00	Each
Two bodies	1768.00	"
Three thru four bodies	- 1726.00	"

Prices quoted above are delivered prices of completed buses to you at Leesburg, Virginia. Should you desire to take delivery of buses at our factory in Kosciusko, Mississippi, we will allow you a NET DEDUCTION of \$100.00 per unit from the prices quoted above. We will also transport your driver's to Mississippi at no cost to you, furnishing them food and lodging on trip to the factory.

Again thanking you for your kind inquiry of May 2nd, we are,

Very truly yours,

SMITH MOORE BODY CO., INC.

J. H. Smith Jr.

JHJR:jl

SMITH-MOORE BODY COMPANY

INCORPORATED

Auto Body Builders & Equipment Distributors

HEIL DUMP BODIES

THERMO KING REFRIGERATION

PAINTING AND LETTERING DESIGNS A SPECIALTY

Brook Road at Lombardy St. : Telephone 5-8648

RICHMOND 20, VIRGINIA

May 4, 1953

Mr. O. L. Emerick, Division Superintendent
Loudoun County Public Schools
Leesburg, Virginia

Dear Mr. Emerick:

We are today in receipt of your valued inquiry with reference to our SUPERIOR PATHFINDER School Bus Bodies. We are pleased to quote you prices and specifications on our SUPERIOR Bodies.

SUPERIOR PATHFINDER Model 36-263
Body 26' 3" long - 96" wide - Capacity 60 - Seat Centers 27"

10 - Rows 39" forward facing seats on each side of aisle. Seats in two tone gray and red. All seats trimmed in Koroseal material. Seats on 27" seat centers. All seats have grab handles both on aisle side and on window side.
Virginia traffic warning lights, new type SEALED BEAM, front and rear with motor driven flasher
Class "A" Arrow directional signals, new SEALED BEAM type, front and rear
Stainless steel Driver's stanchion and guard rail
Stainless steel Entrance door stanchion and guard rail
Stainless steel driver entrance door control handle
Grab handle at front entrance door
Steel shoulder rails under side windows
Driver's rubber floor mat
Combination stop and tail light - r. h. and l. h. rear
First aid kit
Reflector flares and red flags
Fire extinguisher
Two card racks at front - one for driver's route schedule and one for safety poster
Connect W/S wipers to vacuum reserve tank - tank furnished by chassis manufacturer
Body completely sprayed and undercoated before mounting on chassis
Lettered: SCHOOL BUS - STOP - STATE LAW
LOUDOUN COUNTY PUBLIC SCHOOLS
Numbered: To your specifications
Painted: National School Bus Chrome
Rub Rails - Black

All of the above buses are equipped to meet the Virginia State Standards for school bus bodies.

Prices: 60 Pupil Capacity - Body 26' 3" long - Seat Centers 27"

One body	\$1885.00 Each
Two bodies	1843.00 "
Three thru four bodies	1801.00 "

Prices quoted above are delivered prices to you at Leesburg, Virginia. Should you desire to take delivery of completed bus units at our factory in Kosciusko, Mississippi, we will allow you a NET DEDUCTION of \$100.00 per unit from the prices quoted above. We will also transport your driver's to Kosciusko at no cost to you. We will furnish food and lodging for your driver's to Mississippi.

The SUPERIOR PATHFINDER Bus Bodies quoted above is the same bodies as furnished by us to the Fairfax County Schools, the Fauquier County Schools, the Prince William County Schools, the Stafford County Schools, the Culpeper County Schools and to the Warren County Schools.

For your information, we make delivery of completed units fifteen working days after receipt of truck chassis at our plant.

We wish to thank you for your valued inquiry and hope to have the pleasure of serving you.

Very truly yours,

SMITH MOORE BODY CO., INC.


J. H. Smith Jr.

JHRJR:jl

P. S. We have several demonstrators here at Richmond and will be very happy to have our representative bring one by Leesburg to show you.

SUPERIOR
Pathfinder
ALL-STEEL SAFETY SCHOOL COACHES



"THE CHOICE OF THE SOUTH"

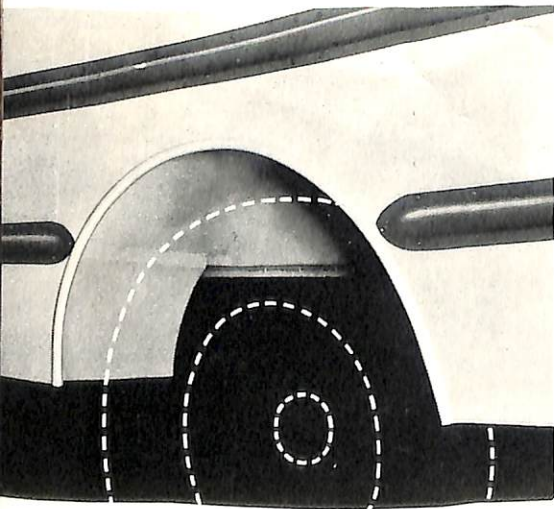
PATHFINDER COACH DIVISION

Superior Coach Corporation • Kosciusko, Mississippi

SUPERIOR *Pathfinder* FOR 1953



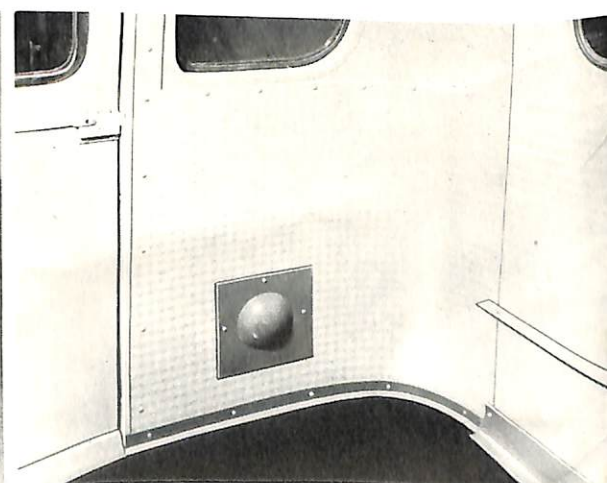
Pathfinder... for exclusive extra values



Gravel shields protect body from damage by flying gravel, dirt or debris. Die-formed wheel-house sealed at the floor against dust and dirt. Body framework further reinforced around wheel-house opening by heavy 1" tubular moulding.



Rear quarter window mounted in zipper rubber blends smoothly with newly designed, rounded side window facings. Full length vent eaves permit ventilation in all kinds of weather or during summer storage.

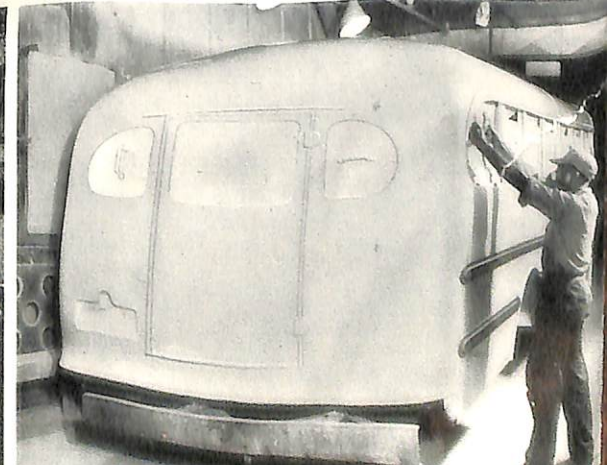
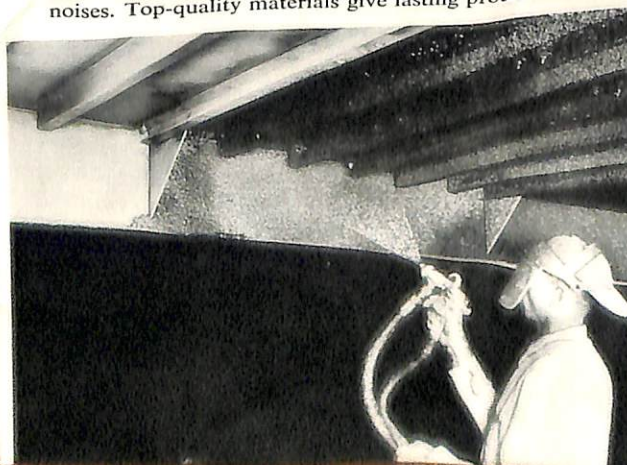
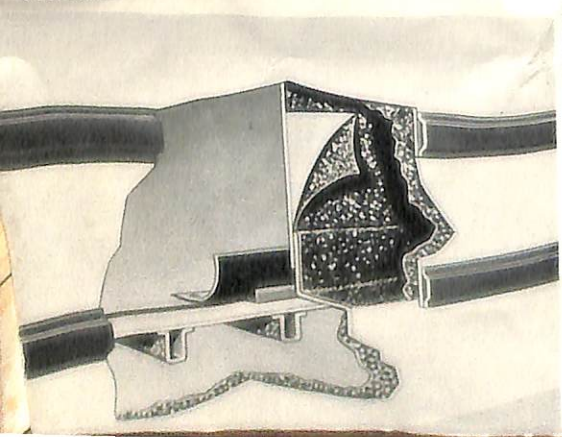


Removable rigidized inside panels facilitate repair of rear quarter outer panels in case of damage. Quick, easy access to inside of outer corner panels is gained by removing metal screws. Removable cover for easy access to tail and stop light.

Double-ply panel insulation, inside of outer panel and outside of inner panel, prevents corrosion. This extra-value feature is standard on all Pathfinders.

Protective undercoating, sprayed over entire underbody of every Pathfinder Coach to keep out dust, draft and fumes, prevents corrosion and minimizes road noises. Top-quality materials give lasting protection.

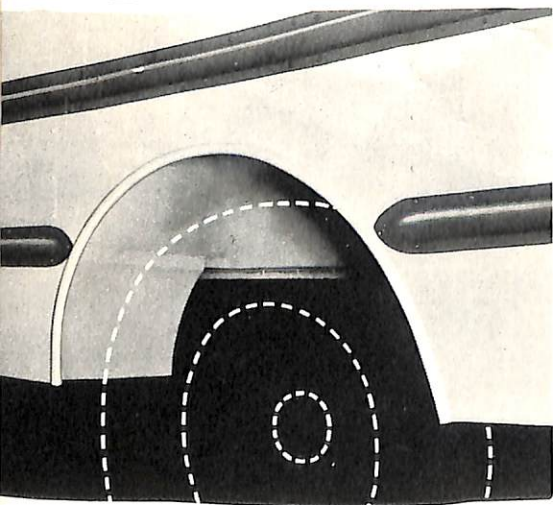
Controlled baked-on painting gives the Pathfinder a deluxe finish equal to that of passenger cars. Air-conditioned spray booths and thermostatically regulated ovens insure a mirror-like, long-life finish.



SUPERIOR *Pathfinder* FOR 1953



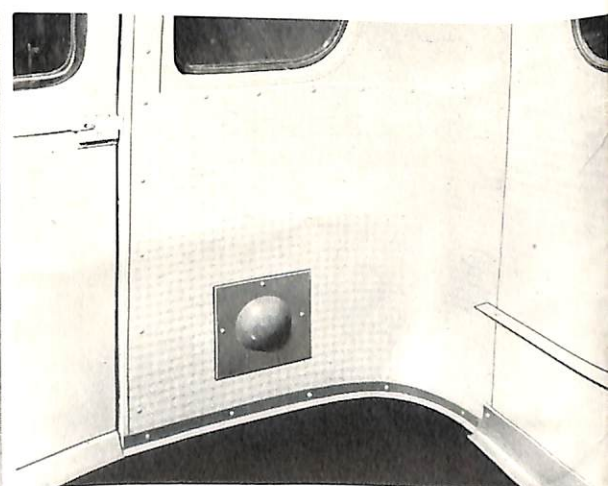
Pathfinder...for exclusive extra values



Gravel shields protect body from damage by flying gravel, dirt or debris. Die-formed wheel-house sealed at the floor against dust and dirt. Body framework further reinforced around wheel-house opening by heavy 1" tubular moulding.



Rear quarter window mounted in zipper rubber blends smoothly with newly designed, rounded side window facings. Full length vent eaves permit ventilation in all kinds of weather or during summer storage.

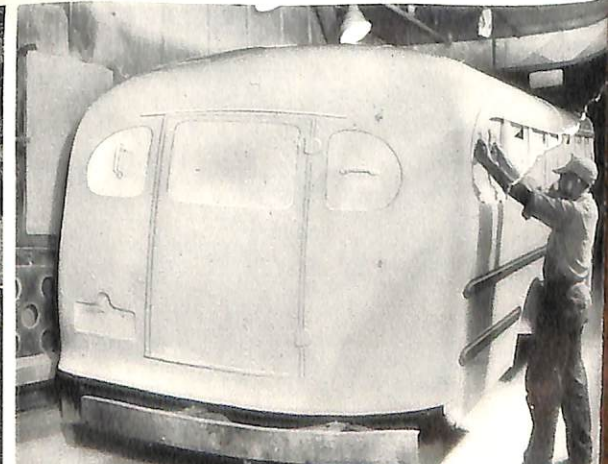
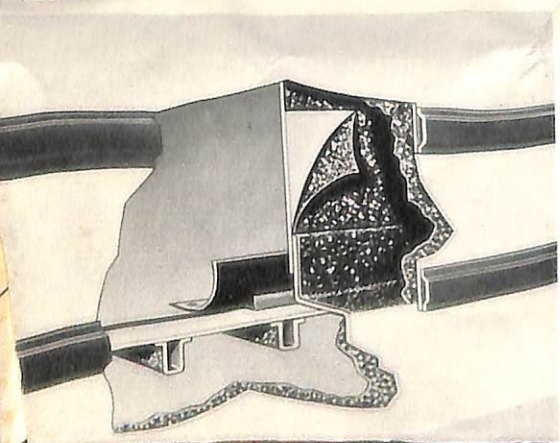


Removable rigidized inside panels facilitate repair of rear quarter outer panels in case of damage. Quick, easy access to inside of outer corner panels is gained by removing metal screws. Removable cover for easy access to tail and stop light.

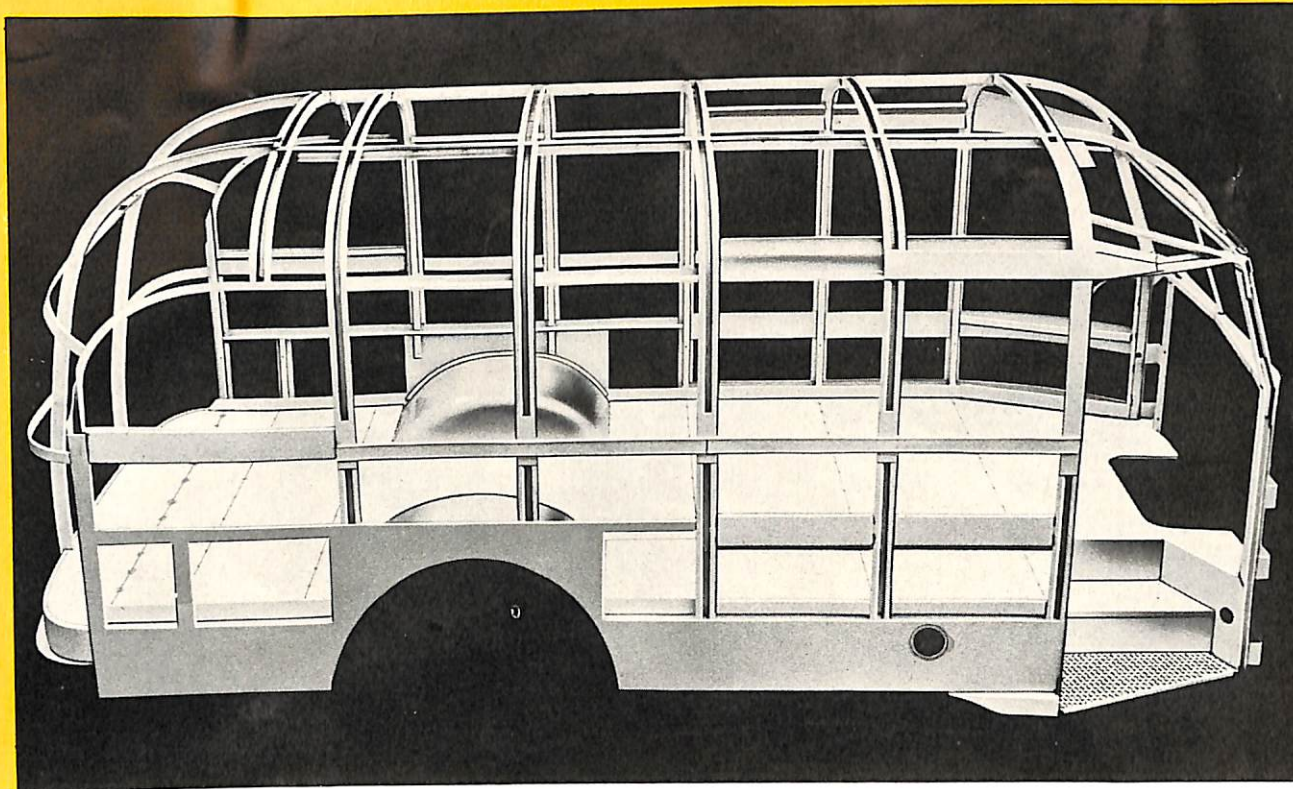
Double-ply panel insulation, inside of outer panel and outside of inner panel, prevents corrosion. This extra-value feature is standard on all Pathfinders.

Protective undercoating, sprayed over entire underbody of every Pathfinder Coach to keep out dust, draft and fumes, prevents corrosion and minimizes road noises. Top-quality materials give lasting protection.

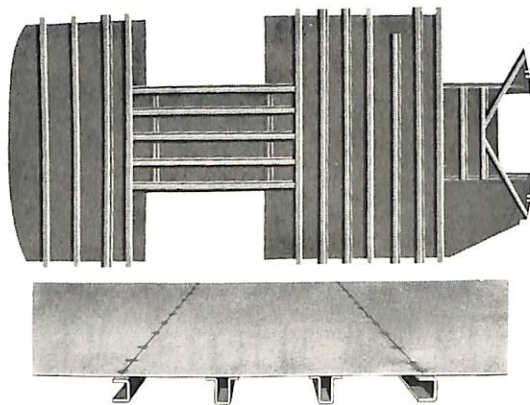
Controlled baked-on painting gives the Pathfinder a deluxe finish equal to that of passenger cars. Air-conditioned spray booths and thermostatically regulated ovens insure a mirror-like, long-life finish.



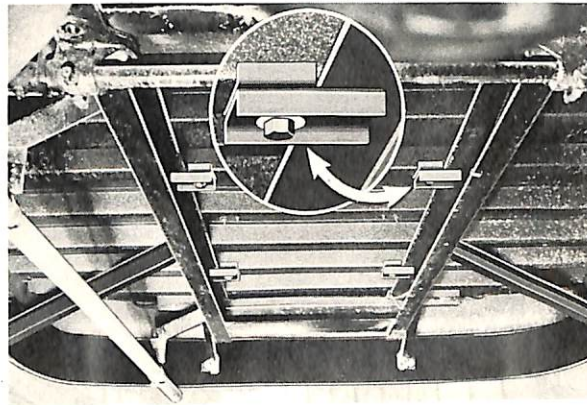
Pathfinder...for strength that's master-engineered and precision-built



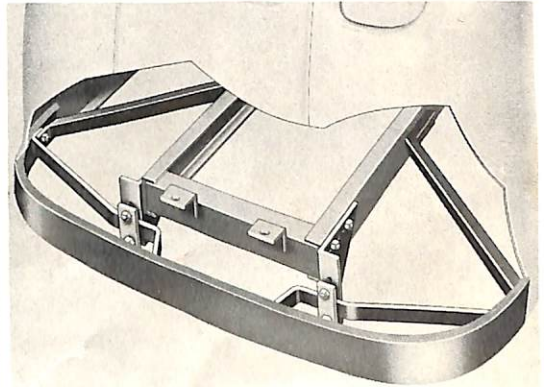
Pathfinder — and only Pathfinder — gives you this all-welded "Uniframe" . . . the strongest school bus frame . . . bar none. Front to rear, underbody to roof, frame sections are engineered to reinforce one another. **RESULT: Unequalled durability and economy in service . . . unmatched protection for your children.**



Solid foundation for a fortress of strength is this all-welded, all-steel floor. Heavy-gauge floor panels are welded to full-width, extra-deep, extra-rugged U-shaped cross members, spaced every 27½ inches with heavy intermediate members welded every 9".



Safe, secure body mounting—strong steel clamps secure underbody to chassis frame and are anchored by bolts and lock-nuts. Anti-squeak insulation prevents metal-on-metal contact.



Massive chassis-attached bumper is one-piece, double-flanged, wrap-around type—transmits shock of any impact through chassis to tires, rather than through coach and to passengers. Tires serve as secondary shock-absorbers.

SUPERIOR PATHFINDER SPECIFICATIONS CONSTRUCTION

Body Dimensions: 96" outside width, 90" inside width, 68" inside height.

Underbody: Steel floor panels, "U" channel crossmembers spaced 27½", two intermediate channels between crossmembers. Reinforcements at front end and between wheelhouses.

Side Frame: Die-formed, shaped pillars from floor to roof bow, spaced 27½", braced by 14 horizontal full-length strainers. Rounded pillar facings—rear side quarter window enclosed in zipper rubber.

Roof Frame: One piece double-flanged channel roof bows spaced 27½", welded to a continuous roof rail on each side.

Driver's Seat: Adjustable 4" fore and aft. Spring cushion, padded back; heavy-duty vinyl plastic upholstery. Rigidized steel seat back panel.

Entrance Step: Weather-protected double inside step. Non-skid metal tread. Ground step height 14" to 18" (loaded).

Windshield: Two piece, non-glare type; safety plate glass mounted in continuous rubber channel. Two heavy-duty vacuum wipers.

Side Windows: Full drop safety sash opening area to State Specifications; high-test safety sheet glass (side and rear). Driver controlled ventilating window.

Ventilation: Stale air expelled by roof ventilator through manually controlled grills on inside panels.

Sun Visor: Large, interior, fully adjustable type.

Wiring: Body wiring with airplane-type connectors; separate circuits and controls for each class of lighting. Auto-motive loom circuits installed between body panels and protected with separate breakers. Central switch panel convenient to driver.

Seats: One inch tubular steel frames, die-formed steel

Outside Paneling: Die-formed roof and body panels, lapped and double riveted to frame. Split steel tube moulding on wheelhouse.

Insulation: Inner and outer body and door panels coated with deadening and insulating materials. Underbody sprayed with sound deadener and sealer.

Inside Paneling: Rigidized body panels formed and attached to frame curved cove moulding at floor line for easy cleaning. Roof panels applied transversely from window header to window header with screws at the header only.

Paint Preparation: Before priming, all exposed parts are treated with a combination cleaning and phosphate coating

BODY

backs, 18 degree tilt back, offset legs. Wall side mounted with flashproof rubberized floor. Back fully padded construction; two-tone vinyl plastic fabric upholstery. Seat grab handles.

Stanchions and Grab Rail: Two vertical and two horizontal plastic coated stanchions placed at strategic points of entry. Full-length plastic coated grab handle just inside entrance door at right. Decency panel to left of entrance door.

Entrance Doors: Manually-controlled two-leaf folding glass view panels above and below. Closing edges equipped with safety rubber. Splash shield at bottom of front leaf.

Emergency Door: 34" x 51" located at center rear. Hinged at right. Safety guard on inside release. Removable outside handle.

Rear Vision: Large non-glare inside mirror; additional outside rear-view mirror at left of driver.

Clearance Lights: Four lights—2 front, 2 rear. Lens color

chemical. Unexposed frame parts and panels treated and painted with red lead and oil.

Guard Rails: Die-pressed steel; one at floor level, one at seat cushion level. Guard rails are pre-painted and installed after body has been painted and baked.

Wheelhouse: One-piece, die-formed wheelhouse sealed at floor; dust-proof, water-proof. Reinforced body framework around opening.

Body Mounting: Body mounted to chassis with sturdy clamps. Insulating spacers between chassis frame and body to clear rivet heads. Chassis frame extensions carried to extreme rear body cross sill. Tail pipe extended 12" maximum, no charge. Chassis manufacturer's tire carrier and gasoline tank.

to State Specifications:
Stop Light: Chassis manufacturer's tail and stop light at left rear in recessed license plate holder.

Interior Lighting: One row flush-type dome lights. Automatic stepwell light.

Rear Bumper: Steel wrap-around rear bumper mounted and braced at end of chassis frame.

Floor Covering: High grade smooth floor covering under seats, safety tread aisle.

Tool Compartment: Tool box inside under right front seat.

Painting: Baked-on primer and synthetic enamel. Standard exterior color is National School Bus Chrome, with black guard rails. Charge for special colors include finishing chassis hood, cowl, and fenders.

Lettering: "School Bus" in 6" letters front and rear. "Emergency Door" in 2" letters inside.

Card racks: Two card racks above windshield. Bus schedule card above driver, left side; School Bus Safety Rules, right side.

All legal accessories required by various states are available on Pathfinder Coaches. In the interest of continued improvement all specifications listed are subject to change without notice.



Pathfinder

FOR LIFETIME LIFE-PROTECTION

When you select a new school bus, you want protection that is *proved*—not just promised. You want a coach that will stay new through the years, both in appearance and performance. Important, too, are all the real improvements that add to passenger comfort and convenience. In short . . .

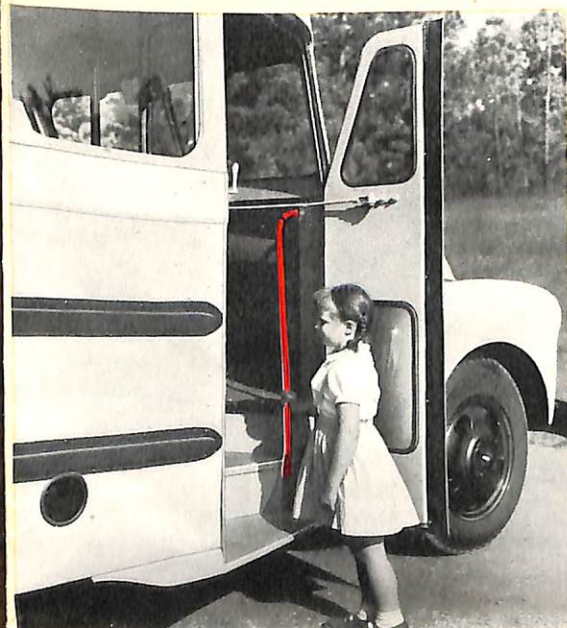
**You want most protection per dollar
with least upkeep per year**

In the manufacture of Superior *Pathfinder* School Coaches, nothing is left undone to guarantee that double value to the highest possible degree. Run your eyes over the trimly rugged, all-welded "Uni-frame" . . . built on a rock-solid steel foundation with the girdered strength of a bridge or battleship. Only the *Pathfinder* offers the extra safety of this protection-engineered frame, strongest ever built by every standard.

Study the other design and construction features described briefly throughout this catalog. Each and every one is an outstanding value in itself. Together, they represent your safest investment in student transportation today—and for many tomorrows to come. Better still, decide now to see an actual demonstration of the Superior *Pathfinder* All-Steel Safety Coach. See for yourself why *Pathfinder* rates highest with most safety-minded school officials, yet is priced with the lowest. Your Superior *Pathfinder* Distributor always welcomes the opportunity to serve you.



ROOF FLASHER LIGHTS, WRAP-AROUND GUARD RAILS, AND REFLECTORS AVAILABLE STANDARD EXTRAS.



Pathfinder "Safentrance" doors open wide for comfortable, safe passage. Vertical, weather-tight rubber seals also prevent accidental pinching. Non-slip, safety-tread steps are properly spaced to assure certain footing, kept free of water and ice by new stepwell splash guard, and illuminated by shielded automatic light. Easy-to-reach full-length plastic coated grab handle . . . another new Pathfinder safety feature . . . helps even smallest children get on or off bus easily.

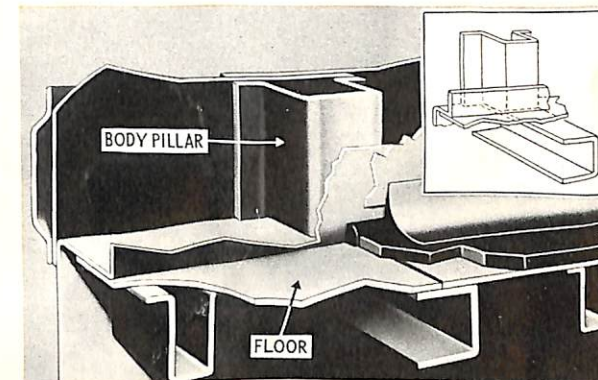
Full-range vision for the driver assures greater passenger safety. V-type design of widesweep windshield reduces glare. High-test safety glass mounted in self-sealed rubber channel. Narrow center bar and corner posts cut down blind spots. Large rear-view mirrors inside and outside. Two card racks (one for driver's schedule, the other for safety rules) are standard equipment. Red plastic-coated seat rails shown, available extra.



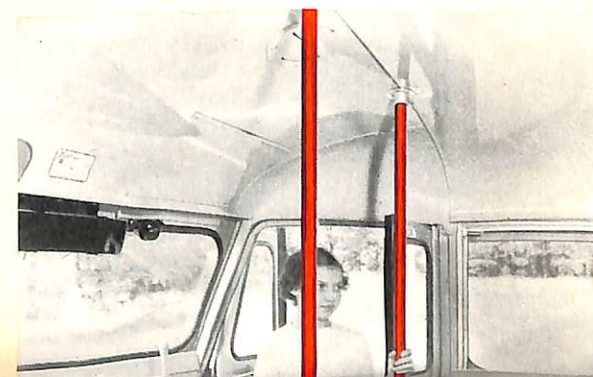
Sure-action rear emergency door opens easily on rugged, non-sagging butt hinges to permit fast and safe exit. Safety guard over inside release prevents accidental opening. Left rear door available extra.



High-test safety glass windows, side and rear. Side windows available with standard full drop safety sash or split sash (available extra, shown above) conforming to state specifications. Appearance of windows greatly enhanced by newly-designed rounded window facings. Note full length vent eave which permits ventilation in bad weather or during summer storage.



Securely mounted side and end assemblies are welded to the *top* of the underbody floor, distributing the weight evenly over the floor assembly to obtain maximum integrated strength.



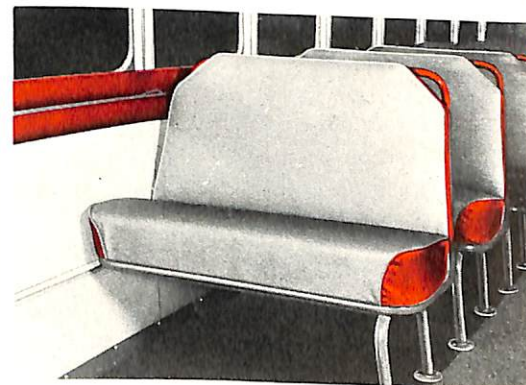


Pathfinder... FOR A SUPERIOR INTERIOR

Modern, spacious, truly comfortable . . . the interior of the Pathfinder for 1953 is shown above. Years of restful, refreshing riding are assured by the roomy, widely spaced seats—offering more leg room than required by state specifications. Seats upholstered in gray and red vinyl plastic that resists scratching, scuffing, stains. Note the other special comfort and safety advantages shown in accompanying illustrations. Smooth black floor covering, under seats, will literally “heal” itself if cut or punctured. Terra cotta safety-tread covers the aisle. Red plastic seat grab rails—padded shoulder rails—available extras. Inside, as outside, Pathfinder is the *stand-out value*.

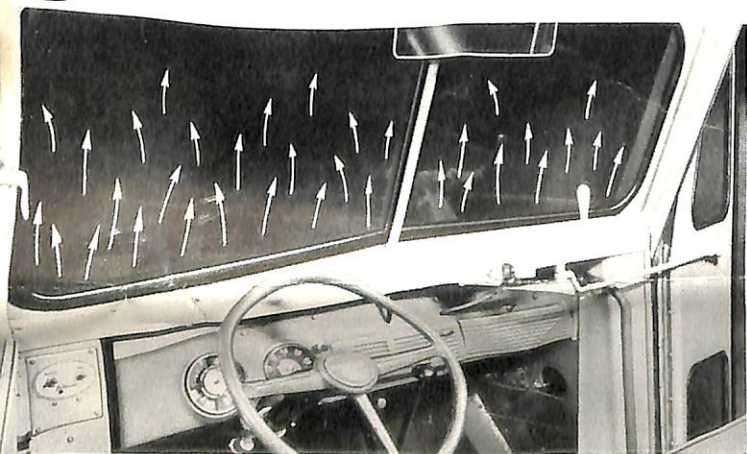


Comfort-fitted driver's seat adjustable four ways to suit individual requirements. Permits full attention to driving. Heavily padded back and resilient spring cushion. Durable vinyl plastic upholstery is practically wear-proof.

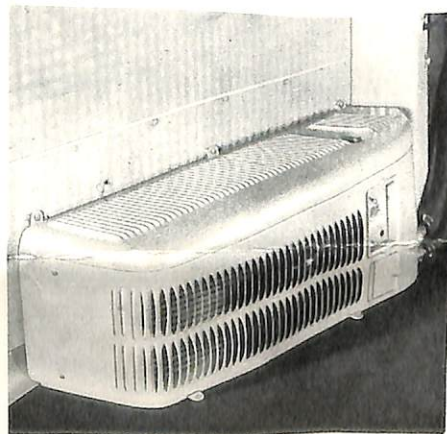


Pathfinder seats are securely mounted to a full length, heavy duty seat rail which in turn is firmly attached to each side body pillar. Shoulder rails and plastic coated seat grab handles available extra.

Pathfinder... FOR ALL-SEASONS COMFORT



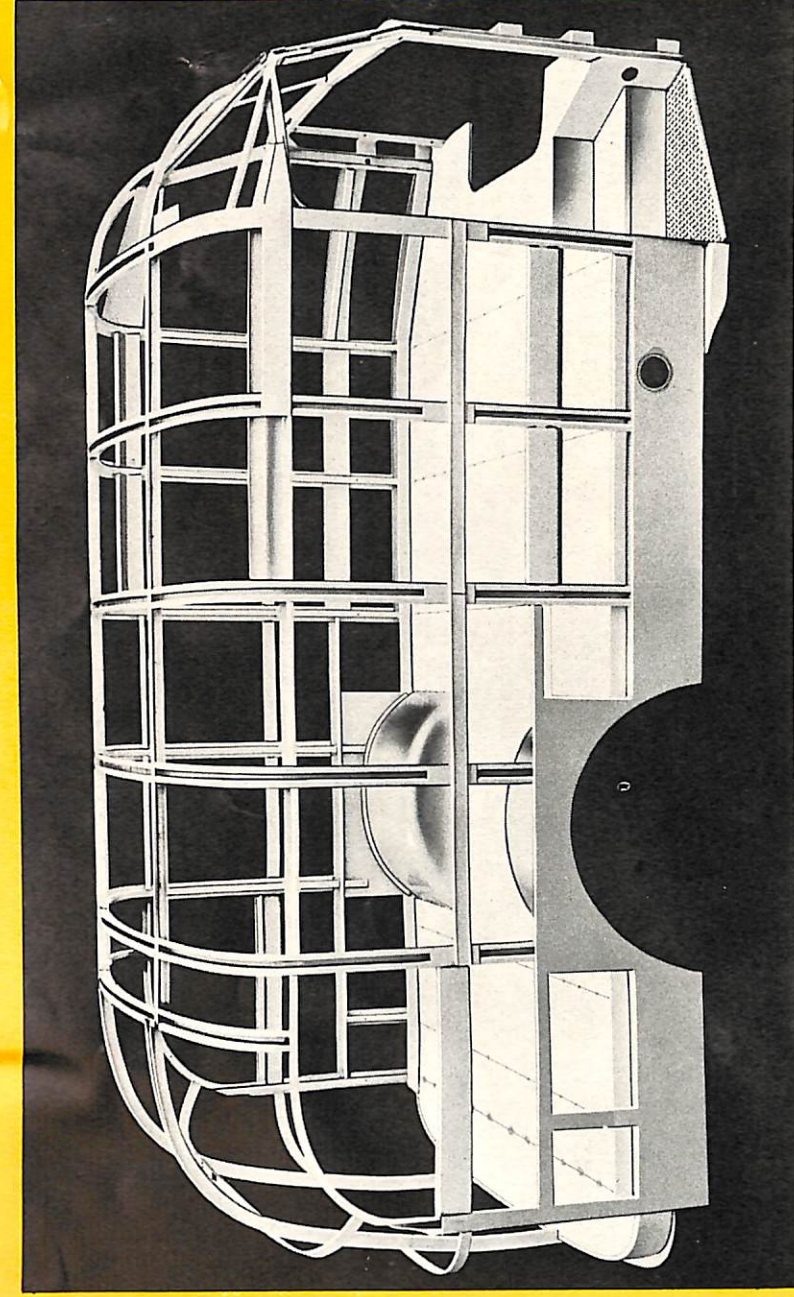
Fresh-air heater and defroster available as extra equipment. Built-in defroster keeps windshield clear of fog and ice. Heater connections above floor insure minimum loss of heat. Prolongs life of heater hose. Temperature control of heater at driver's fingertips. Assures healthful riding comfort in cool to coldest weather.



Restful, wear-resistant seats are tilted 18° for greater comfort. The seat back is padded with flashproof rubberized hair, offering a minimum seat thickness of two inches. Cushion is of box spring construction.

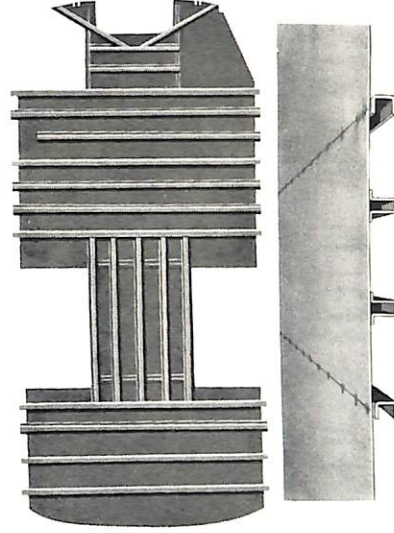
Pathfinder... FOR MOST PROTECTION PER DOLLAR... LEAST UPKEEP PER YEAR

Pathfinder... for strength that's master-engineered and precision-built



Pathfinder — and only Pathfinder — gives you this all-welded "Uniframe" . . . the strongest school bus frame . . . bar none. Front to rear, underbody to roof, frame sections are engineered to reinforce one another. **RESULT:** Unequaled durability and economy in service . . . unmatched protection for your children.

Solid foundation for a fortress of strength is this all-welded, all-steel floor. Heavy-gauge floor panels are welded to full-width, extra-deep, extra-rugged U-shaped cross members, spaced every 27½ inches with heavy intermediate members welded every 9".



Body Dimensions: 96" outside width, 90" inside width, 68" inside height.

Underbody: Steel floor panels, "U" channel crossmembers spaced 27½", two intermediate channels between crossmembers. Reinforcements at front end and between wheelhouses.

Side Frame: Die-formed, shaped pillars from floor to roof bows, spaced 27½", braced by 14 horizontal full-length strainers. Rounded pillar facings — rear side quarter window enclosed in zipper rubber.

Roof Frame: One piece double-flanged channel roof bows spaced 27½", welded to a continuous roof rail on each side.

Driver's Seat: Adjustable 4" fore and aft. Spring cushion, padded back; heavy-duty vinyl plastic upholstery. Rigidized steel seat back panel.

Entrance Step: Weather-protected double inside step. Non-skid metal tread. Ground step height 14" to 18" (loaded).

Windshield: Two piece, non-glare type; safety plate glass mounted in continuous rubber channel. Two heavy-duty vacuum wipers.

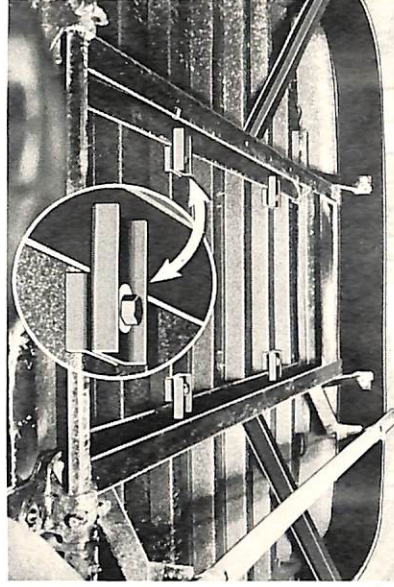
Side Windows: Full drop safety sash opening area to State Specifications; high-test safety sheet glass (side and rear). Driver controlled ventilating window.

Ventilation: Stale air expelled by roof ventilator through manually controlled grills on inside panels.

Sun Visor: Large, interior, fully adjustable type.

Wiring: Body wiring with airplane-type connectors; separate circuits and controls for each class of lighting. Automotive loom circuits installed between body panels and protected with separate breakers. Central switch panel convenient to driver.

Seats: One inch tubular steel frames, die-formed steel



Safe, secure body mounting — strong steel clamps secure underbody to chassis frame and are anchored by bolts and lock-nuts. Anti-squeak insulation prevents metal-on-metal contact.

Outside Paneling: Die-formed roof and body panels, lapped and double riveted to frame. Split steel tube moulding on wheelhouse.

Insulation: Inner and outer body and door panels coated with deadening and insulating materials. Underbody sprayed with sound deadener and sealer.

Inside Paneling: Rigidized body panels formed and attached to frame curved cove moulding at floor line for easy cleaning. Roof panels applied transversely from window header to window header with screws at the header only.

Paint Preparation: Before priming, all exposed parts are treated with a combination cleaning and phosphate coating

BODY

backs, 18 degree tilt back, offset legs. Wall side mounted to wall rail, aisle side bolted to floor. Back fully mounted with flashproof rubberized hair; cushions of box spring construction; two-tone vinyl plastic fabric upholstery. Seat grab handles.

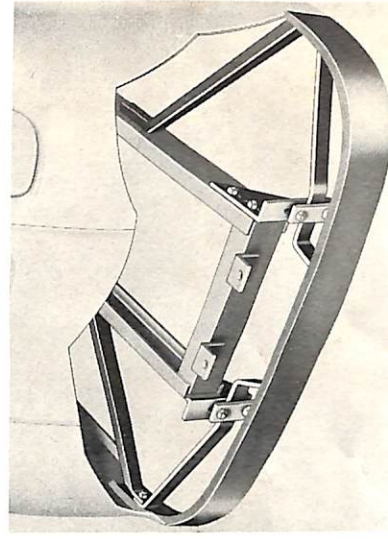
Stanchions and Grab Rail: Two vertical and two horizontal plastic coated stanchions placed at strategic points of entry. Full-length plastic coated grab handle just inside entrance door at right. Decency panel to left of entrance door.

Entrance Doors: Manually-controlled two-leaf folding doors. Satin-finished chromed door control. Large safety glass view panels above and below. Closing edges equipped with safety rubber. Splash shield at bottom of front leaf.

Emergency Door: 34" x 51" located at center rear. Hinged at right. Safety guard on inside release. Removable outside handle.

Rear Vision: Large non-glare inside mirror; additional outside rear-view mirror at left of driver.

Clearance Lights: Four lights — 2 front, 2 rear. Lens color



Massive chassis-attached bumper is one-piece, double-flanged, wrap-around type — transmits shock of any impact through chassis to tires, rather than through coach and to passengers. Tires serve as secondary shock-absorbers.

chemical. Unexposed frame parts and panels treated and painted with red lead and oil.

Guard Rails: Die-pressed steel; one at floor level, one at seat cushion level. Guard rails are pre-painted and installed after body has been painted and baked.

Wheelhouse: One-piece, die-formed wheelhouse sealed at floor; dust-proof, water-proof. Reinforced body frame-work around opening.

Body Mounting: Body mounted to chassis with sturdy clear. Insulating spacers between chassis frame and body to clear rivet heads. Chassis frame extensions carried to extreme rear body cross sill. Tail pipe extended 12" maximum, no charge. Chassis manufacturer's tire carrier and gasoline tank.

to State Specifications.

Stop Light: Chassis manufacturer's tail and stop light at left rear in recessed license plate holder.

Interior Lighting: One row flush-type dome lights. Automatic stepwell light.

Rear Bumper: Steel wrap-around rear bumper mounted and braced at end of chassis frame.

Floor Covering: High grade smooth floor covering under seats, safety tread aisle.

Tool Compartment: Tool box inside under right front seat. Stand-painted on primer and synthetic enamel. Standard exterior color is National School Bus Chrome, with black guard rails. Charge for special colors include finishing chassis hood, cowl, and fenders.

Lettering: "School Bus" in 6" letters front and rear. "Emergency Door" in 2" letters inside.

Card racks: Two card racks above windshield. Bus schedule rack above driver, left side; School Bus Safety Rules, right side.

All legal accessories required by various states are available on Pathfinder Coaches. In the interest of continued improvement all specifications listed are subject to change without notice.