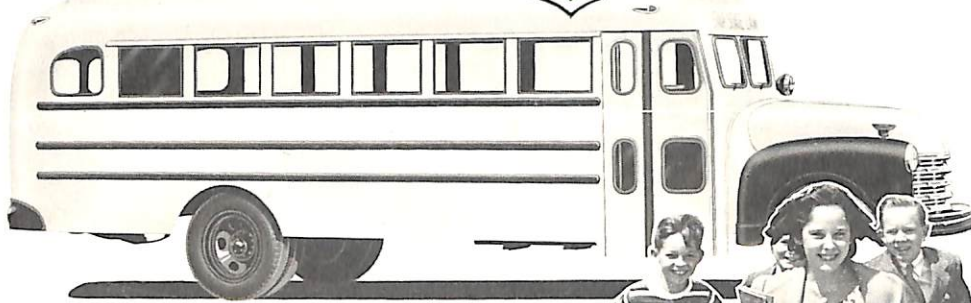


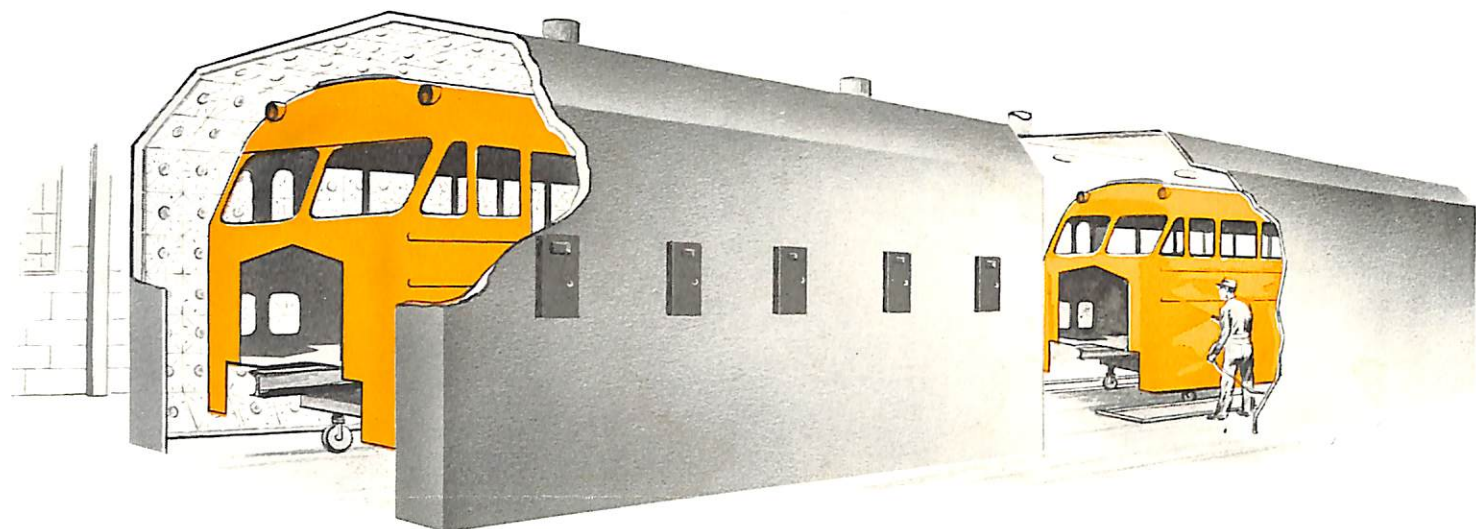
Trans. 4-53

Thomas



ALL STEEL

SCHOOL BUSES



BODY SPRAYING and BAKING

One of the first things you will notice about a Thomas Bus is the beauty and lustre of the finish. The secret lies not only in the quality of the paint, but also in the method of application. The high gloss enamel is applied to the completed body in a modern enclosed spray booth where all air is constantly and thoroughly cleaned by water. The paint is applied with a pressurized flow that assures a smooth, even surface.

The final step — the baking process — determines the beauty and lasting qualities of the finish. Thomas has installed the most modern, efficient *infra-red* baking oven made today. The *infra-red* process is the newest industrial baking method. It provides a means of transferring heat from filament lamps directly to the body paint by radiation — a far more efficient process than the indirect method.

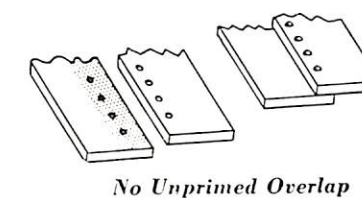
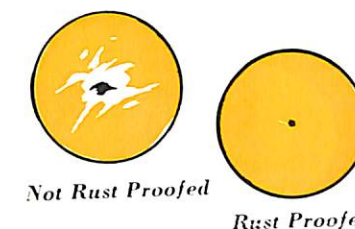
The end result is a harder, more durable finish that retains its high gloss and rich lustre through miles and miles of use. It is another example of the quality of Thomas engineering and materials that assure you of *extra* value and service.

THE METAL PARTS OF EVERY THOMAS BUS ARE RUST PROOFED

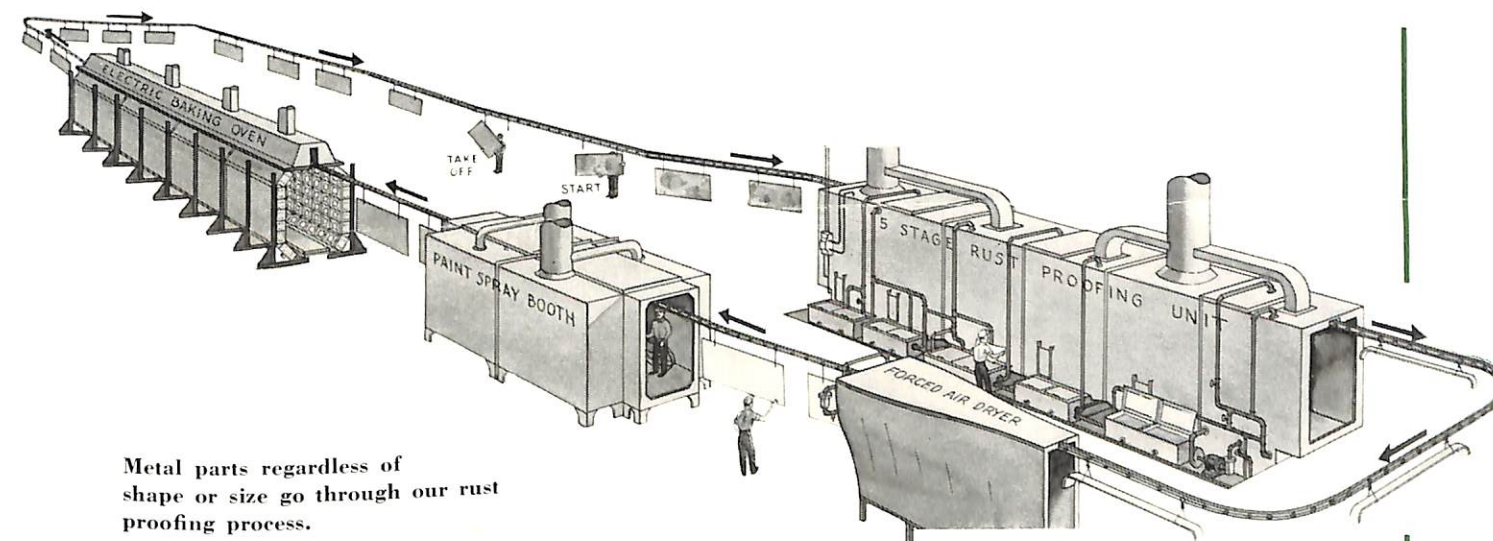
BEFORE ASSEMBLY

Check these important advantages of Thomas Phosphate Rust proofing

- Reduces Maintenance Costs
- Retards Rust on Metal Inside and Out
- All Hidden Parts and Overlaps Treated
- Localizes Accidental Finish Damage
- Firmly Anchors Paint to Metal
- Produces a Harder, Longer Lasting Finish
- Assures Uniformity of Finish Color



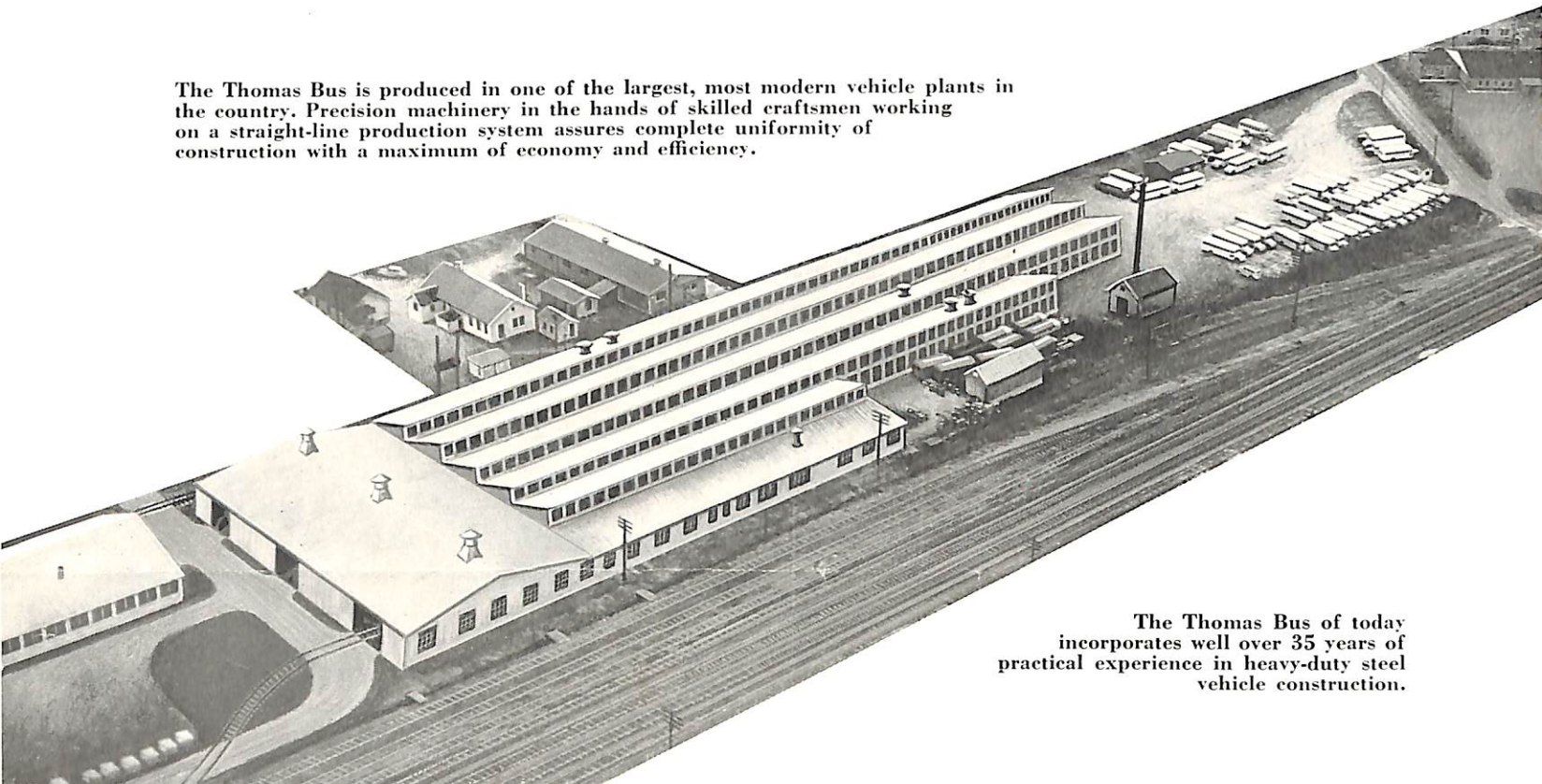
Metal parts that go into a Thomas Bus are cleaned, primed and rust proofed *before* final assembly. This scientific protection not only adds years of life to the metal, but also insures a longer lasting, better looking finish.



Metal parts regardless of shape or size go through our rust proofing process.

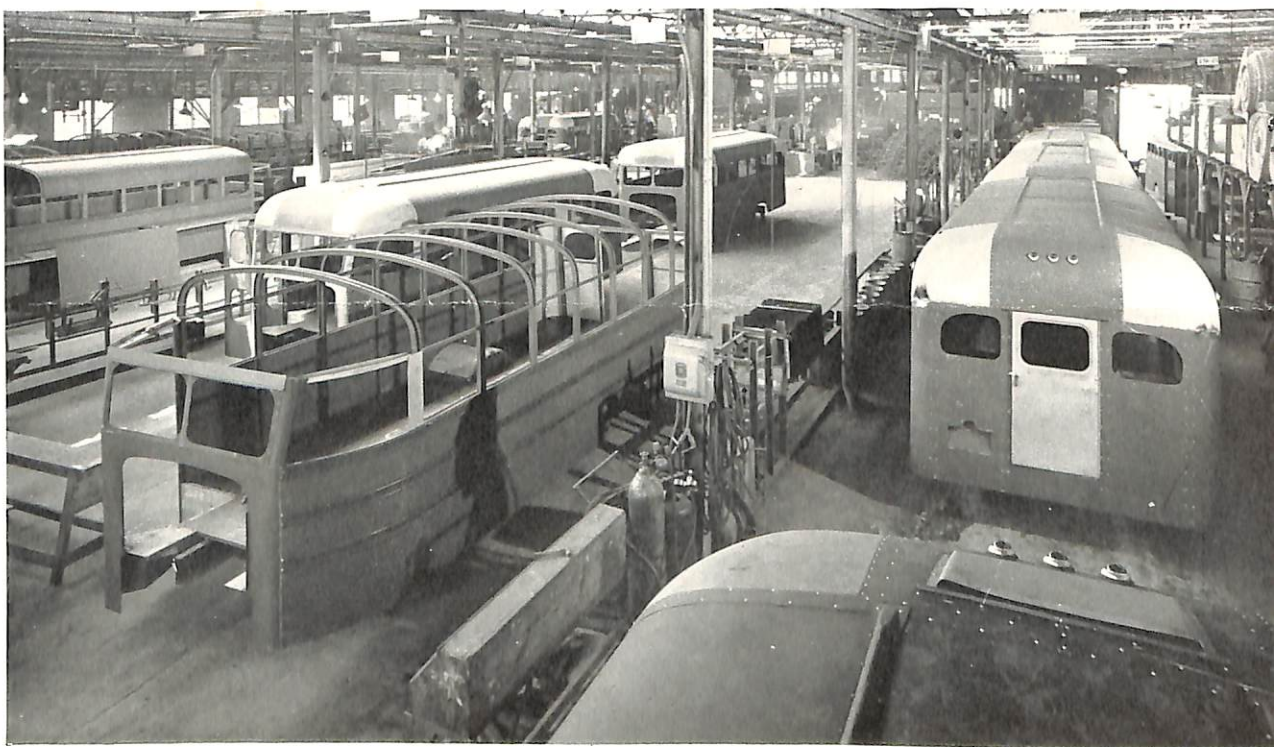
The unit in which the metal is cleaned, phosphate coated and etched is under the constant control of trained technicians. Although the speed of the conveyor is sufficiently slow to permit natural air drying, the metal passes through a heated, forced air tunnel before entering the paint spray booth.

The Thomas Bus is produced in one of the largest, most modern vehicle plants in the country. Precision machinery in the hands of skilled craftsmen working on a straight-line production system assures complete uniformity of construction with a maximum of economy and efficiency.



The Thomas Bus of today incorporates well over 35 years of practical experience in heavy-duty steel vehicle construction.

A view of a portion of the straight-line production system.



PERLEY A. THOMAS CAR WORKS, INC.

HIGH POINT, NORTH CAROLINA